

## Contextual Information

Year Group	No. of Pupils	Boys / Girls	Pupil Premium	Free School Meals	Not White British *	1st language not English *	Special Educational Needs	SEN Support	Statement	Education, Health and Care Plan	No. of Looked after Children
Rec	8	5 (62.5%) / 3 (37.5%)	8 (100%)	7 (87.5%)	1 (12.5%)	0 (0%)	1 (12.5%)	1 (12.5%)	0 (0%)	0 (0%)	0 (0%)
Y1	14	8 (57.1%) / 6 (42.9%)	14 (100%)	9 (64.3%)	1 (7.1%)	0 (0%)	6 (42.9%)	5 (35.7%)	0 (0%)	1 (7.1%)	0 (0%)
Y2	8	4 (50.0%) / 4 (50.0%)	8 (100%)	6 (75.0%)	1 (12.5%)	0 (0%)	6 (75.0%)	6 (75.0%)	0 (0%)	0 (0%)	0 (0%)
Y3	15	4 (26.7%) / 11 (73.3%)	15 (100%)	9 (60.0%)	2 (13.3%)	0 (0%)	7 (46.7%)	7 (46.7%)	0 (0%)	0 (0%)	0 (0%)
Y4	7	4 (57.1%) / 3 (42.9%)	7 (100%)	7 (100%)	1 (14.3%)	0 (0%)	4 (57.1%)	3 (42.9%)	0 (0%)	1 (14.3%)	0 (0%)
All	52	25 (48.1%) / 27 (51.9%)	52 (100%)	38 (73.1%)	6 (11.5%)	0 (0%)	24 (46.2%)	22 (42.3%)	0 (0%)	2 (3.8%)	0 (0%)

Ethnic Group	No. of Boys	No. of Girls	% Pupils
White - British	22	24	88.5
White and Black African	0	1	1.9
Any Other Asian Background	0	1	1.9
White and Black Caribbean	2	1	5.8
Any Other Mixed Background	1	0	1.9
All	25	27	100.0

## Attainment Summary:

Pupil Premium Outcomes to Target		Reading			Writing			Math		
Year Group	Cohort size	2019 Target	2019 % ARE/ARE+	2019 %ARE+	2019 Target	2019 %ARE/ARE+	2019 %ARE+	2019 Target	2019 %ARE/ARE+	2019 %ARE+
Year 1	14	86%	71%	21%	79%	71%	7%	93%	79%	14%
Year 2	8	75%	63%	13%	75%	63%	13%	75%	75%	13%
Year 3	15	80%	80%	40%	80%	80%	13%	80%	80%	33%
Year 4	7	86%	86%	14%	71%	57%	14%	71%	43%	14%

Reading			Writing			Mathematics		
Yr1 Aut1	Yr1 Sum2	Progress	Yr1 Aut1	Yr1 Sum2	Progress	Yr1 Aut1	Yr1 Sum2	Progress
35.8	39.2	3.4	35.5	39.2	3.7	35.8	40.0	4.2

Reading			Writing			Mathematics		
Yr3 Sum2	Yr4 Sum2	Progress	Yr3 Sum2	Yr4 Sum2	Progress	Yr3 Sum2	Yr4 Sum2	Progress
Points	Step		Points	Step		Points	Step	
40.0	46.2	6.2	39.8	45.8	6.0	40.3	45.8	5.5

Reading			Writing			Mathematics		
Yr2 Sum2	Yr3 Sum2	Progress	Yr2 Sum2	Yr3 Sum2	Progress	Yr2 Sum2	Yr3 Sum2	Progress
45.7	51.3	5.6	44.9	50.4	5.5	45.7	51.1	5.4

## Age Related Expectations Summary by Year Group

14 pupils Period: Yr1 Sum2	Below	On Track or higher	Higher
Reading	4 (28.6%)	10 (71.4%)	3 (21.4%)
Writing	4 (28.6%)	10 (71.4%)	1 (7.1%)
Mathematics	3 (21.4%)	11 (78.6%)	2 (14.3%)

8 pupils Period: Yr2 Sum2	Below	On Track or higher	Higher
Reading	3 (37.5%)	5 (62.5%)	1 (12.5%)
Writing	3 (37.5%)	5 (62.5%)	1 (12.5%)
Mathematics	2 (25.0%)	6 (75.0%)	1 (12.5%)

15 pupils Period: Yr3 Sum2	Below	On Track or higher	Higher
Reading	3 (20.0%)	12 (80.0%)	6 (40.0%)
Writing	3 (20.0%)	12 (80.0%)	2 (13.3%)
Mathematics	3 (20.0%)	12 (80.0%)	5 (33.3%)

7 pupils Period: Yr4 Sum2	Below	On Track or higher	Higher
Reading	1 (14.3%)	6 (85.7%)	1 (14.3%)
Writing	3 (42.9%)	4 (57.1%)	1 (14.3%)
Mathematics	4 (57.1%)	3 (42.9%)	1 (14.3%)

## Progress of Pupil Premium children

Non SEND Pupil Premium points progress (Y2,3 and 4)

All Pupils (13 pupils)	Reading	Writing	Mathematics	Average
Progressed by 6 steps or more	12 (92.3%)	12 (92.3%)	13 (100%)	12.3 (94.9%)
Progressed by 5 steps	1 (7.7%)	1 (7.7%)	0 (0%)	0.7 (5.1%)
Progressed by 4 steps	0 (0%)	0 (0%)	0 (0%)	0.0 (0%)
Progressed by 3 steps	0 (0%)	0 (0%)	0 (0%)	0.0 (0%)
Progressed by 2 steps	0 (0%)	0 (0%)	0 (0%)	0.0 (0%)
Progressed by 1 step	0 (0%)	0 (0%)	0 (0%)	0.0 (0%)
No steps progress	0 (0%)	0 (0%)	0 (0%)	0.0 (0%)
Regressed	0 (0%)	0 (0%)	0 (0%)	0.0 (0%)

### Pupil Premium Average Steps of Progress broken down by group:

	No. Ⓢ	% Ⓢ	Reading			Writing			Mathematics		
			Yr3 Sum2 Ⓢ	Yr4 Sum2 Ⓢ	Progress Ⓢ	Yr3 Sum2 Ⓢ	Yr4 Sum2 Ⓢ	Progress Ⓢ	Yr3 Sum2 Ⓢ	Yr4 Sum2 Ⓢ	Progress Ⓢ
All Pupils	30	100.0	46.1	52.1	6.0	45.6	51.5	5.9	46.0	51.8	5.8
Males	12	40.0	46.9	52.8	5.9	45.8	52.0	6.2	46.6	52.4	5.8
Females	18	60.0	45.6	51.6	6.0	45.4	51.1	5.7	45.6	51.4	5.8
FSM	22	73.3	46.6	52.6	6.0	46.2	52.2	6.0	46.5	52.4	5.9
Not FSM	8	26.7	44.8	50.6	5.8	43.9	49.4	5.5	44.6	50.2	5.6
Pupil Premium	30	100.0	46.1	52.1	6.0	45.6	51.5	5.9	46.0	51.8	5.8
Not Pupil Premium	0	0									
SEN Support	16	53.3	44.3	50.2	5.9	43.8	49.5	5.7	44.3	49.9	5.6
Education, health and care plan	1	3.3	52.0	58.0	6.0	52.0	58.0	6.0	52.0	57.0	5.0
Not SEN	13	43.3	47.9	53.9	6.0	47.3	53.4	6.1	47.6	53.8	6.2
Year Group 2	8	26.7	40.2	46.4	6.2	40.1	46.1	6.0	40.5	46.1	5.6
Year Group 3	15	50.0	46.7	52.5	5.8	45.9	51.7	5.8	46.6	52.4	5.8
Year Group 4	7	23.3	51.6	57.7	6.1	51.0	57.0	6.0	51.0	57.1	6.1

### Non SEND steps of progress:

	No. Ⓢ	% Ⓢ	Reading			Writing			Mathematics		
			Yr3 Sum2 Ⓢ	Yr4 Sum2 Ⓢ	Progress Ⓢ	Yr3 Sum2 Ⓢ	Yr4 Sum2 Ⓢ	Progress Ⓢ	Yr3 Sum2 Ⓢ	Yr4 Sum2 Ⓢ	Progress Ⓢ
All Pupils	13	100.0	47.9	53.9	6.0	47.3	53.4	6.1	47.6	53.8	6.2
Males	5	38.5	47.4	53.4	6.0	46.8	53.0	6.2	47.0	53.2	6.2
Females	8	61.5	48.2	54.2	6.0	47.6	53.6	6.0	48.0	54.1	6.1
FSM	9	69.2	48.8	54.7	5.9	48.3	54.3	6.0	48.4	54.6	6.2
Not FSM	4	30.8	46.0	52.2	6.2	45.0	51.2	6.2	45.8	52.0	6.2
Pupil Premium	13	100.0	47.9	53.9	6.0	47.3	53.4	6.1	47.6	53.8	6.2
Not Pupil Premium	0	0									
SEN Support	0	0									
Education, health and care plan	0	0									
Not SEN	13	100.0	47.9	53.9	6.0	47.3	53.4	6.1	47.6	53.8	6.2
Year Group 2	7	15.4	41.0	47.0	6.0	41.0	47.0	6.0	41.0	47.0	6.0
Year Group 3	8	61.5	47.6	53.6	6.0	46.9	52.9	6.0	47.4	53.5	6.1
Year Group 4	8	23.1	53.3	59.3	6.0	52.7	59.0	6.3	52.7	59.0	6.3

### Pupil Premium Assessment Conversion KS1 to Y4

Reading	Below Y4	ARE Y4	Above Y4
Working Towards KS1	1	3	0
Expected KS1	0	2	0
Greater Depth KS1	0	0	1

- All of the 'working towards' pupils have 3 now ARE

Writing	Below Y4	ARE Y4	Above Y4
Working Towards KS1	3	2	0
Expected KS1	0	1	1
Greater Depth KS1	0	0	0

Maths	Below Y4	ARE Y4	Above Y4
Working Towards KS1	4	0	0
Expected KS1	0	2	0
Greater Depth KS1	0	0	1

### Pupil Premium Assessment Conversion EYFS to KS1

<b>Reading</b>	Below KS1	Expected KS1	Greater Depth KS1
Emerging EYFS	3	1	0
Expected EYFS	0	3	0
Exceeding EYFS	0	0	1

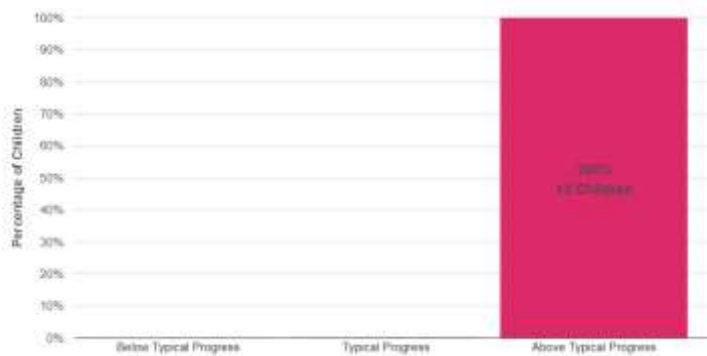
<b>Writing</b>	Below Y4	ARE Y4	Above Y4
Working Towards KS1	3	1	0
Expected KS1	0	4	1
Greater Depth KS1	0	0	1

<b>Maths</b>	Below KS1	Expected KS1	Greater Depth KS1
Emerging EYFS	2	1	0
Expected EYFS	0	4	1
Exceeding EYFS	0	0	0

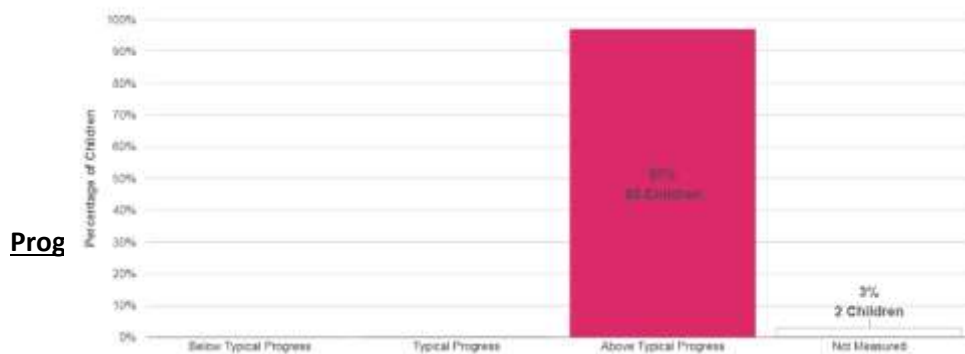
### Attainment EYFS Pupil Premium

	Good Level of Development	Communication & Language	Physical Development	Personal, Social & Emotional Development	Literacy	Maths	Understanding the World	Expressive Arts & Design	Average Points Score
School 2019	76	93	97	87	84	89	95	94	35.8
PP (10 children)	50	80	90	80	60	60	80	90	32.9

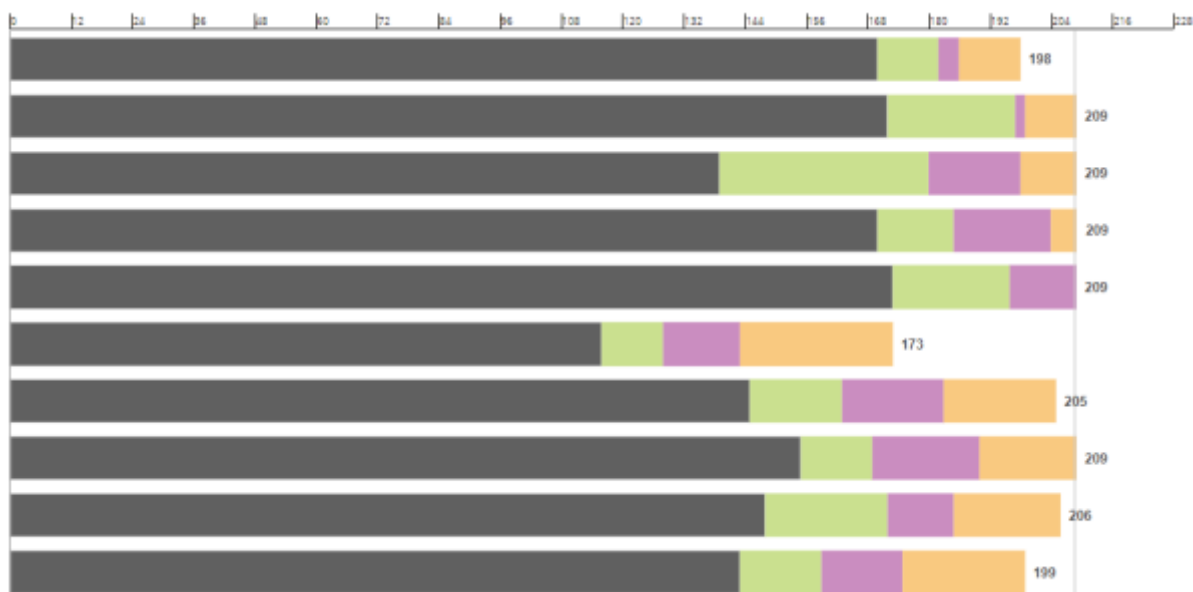
### Progress Summary Reception



### Progress Summary CHERRY CLASS



**Prog**



### Pupil Premium Attendance

Year Group	No. of Pupils	Nur %	Rec %	Y1 %	Y2 %	Y3 %	Y4 %
Reception	8	83.1%	92.0%	-	-	-	-
Year 1	14	88.2%	91.7%	94.0%	-	-	-
Year 2	8	81.6%	90.5%	93.0%	94.5%	-	-
Year 3	15	-	93.7%	94.1%	94.6%	93.6%	-
Year 4	7	-	92.0%	91.1%	91.6%	91.6%	87.5%

- One child in reception 64% rest all above 92%
- 3 below 92% in Y1
- 2 below 92% in year 2
- 4 below 92% in year 3
- 3 below 92% in year 4

Attendance Band	Number of children	Number below ARE	Number at ARE	Number above ARE
95-100	22	4 (3 are EYFS)	14	4
90-95	17	8	9	0
85-90	3	2	1	0
80-85	2	2	2	0
Below 80%	3	3	0	0

### Pupil Premium Exclusions

Autumn term	Spring term	Summer Term
Year 3 pupil for 3 days	Year 4 pupil 0.5 days	Year 3 pupil 0.5 days
Year 1 pupil (x2 exclusions) 6.5 days	Year 3 pupil (x2) 1.5 days	

Y4 pupil 2.5 days	Year 4 pupil 0.5 days	
-------------------	-----------------------	--

All above exclusions were result of dangerous physical behaviour endangering themselves or other pupils

Family support worker involvement:

The family support worker is working with 27 of the 62 Pupil Premium children to support both attendance and improved home circumstances.