



Weekly Update

Friday 8th October 2021



Please email schooloffice@sheffield.cbeds.co.uk if you require support in accessing this newsletter in an alternative format.

Dear Families and Friends,

This week in school we have been delighted with the harvest offer that we can now share with families in need. Thank you.

We are now looking at our consultation offer. As promised we are aiming to make some virtual appointments available as well as face to face. Please could you respond to the poll on Parent mail to ensure we adjust each class accordingly.

Coming into school provides the opportunity to see the displays, our new art gallery and to look at books. We are requesting masks for consultation evenings and politely ask that one parent/carer attends wherever possible.

If you prefer a phone call, this option is also available.

Tidy Ted has had a fantastic impact in our cloakrooms. This remains a difficult job if children bring in rucksacks. These are not part of uniform, so we thank you for your support with this.

Children have been working exceptionally hard and our celebration assembly on Monday was bursting with achievements. Each house continues to have an attendance & punctuality celebration, and this reflects the school's drive to ensure children meet their potential. The guidance from DfE to head teachers regarding attendance is very clear. At consultation we will be able to provide you with your child's information.

We have been impressed this year in the uplift of reading at home. As you are aware from many newsletters reading is crucial to children's development socially as well as academically. I would like to express my thanks to you all for this partnership.

Please do join us for our upcoming curriculum evening in November. Your partnership with us is vital and valued.

Our clubs are up and running and it is wonderful to see our school offering this breadth within current safety measures. We are now delighted to be installing our new sensory trail and outside classroom close to our small school forest. We look forward to unveiling this to you soon.

Please do see the letter brought to you from Bedfordshire Police sent out today on Parent mail regarding road safety near our schools.

Have a wonderful weekend

From Mrs Finch



Values

The values of October are Respect & Responsibility

"Treat others as you would like to be treated." The Golden Rule

Respect for everyone and everything. Taking on responsibility, owning our mistakes or our errors of judgement and resolving them to learn from these experiences.

House Points and Attendance W/E

01.10.21

House Points

Water 998
Air 990
Fire 952
Earth 922

House Attendance & Punctuality

Water 97.87
Air 96.90
Earth 95.89
Fire 95.68



Arriving to school on time

When pupils arrive late, they miss out on essential instructions given at the beginning of the lesson. This can significantly reduce achievement, regardless of academic ability. Your child may also feel awkward arriving to the classroom when everyone else is settled. Furthermore, when one pupil arrives late, it disrupts the entire class and the teacher—everyone's education is compromised.

5 minutes late every day = 3 DAYS OF SCHOOL LOST A YEAR

10 minutes late every day = 6.5 DAYS OF SCHOOL LOST A YEAR

15 minutes late every day = 10 DAYS OF SCHOOL LOST A YEAR

20 minutes late every day = 13 DAYS OF SCHOOL LOST A YEAR

30 minutes late every day = 19 DAYS OF SCHOOL LOST A YEAR



Thank you for your kind donations so far. We have added some more items to our Amazon wish list that will greatly benefit your children with their learning this year. If you would like to purchase a book for our school please click [here](#)



DSP photography will be in school on the 20th of October for individual children's photos. Please can your child come to school with a red jumper or cardigan.

Thank you

Safeguarding Information

At Shefford Lower School we take our responsibilities to promote safeguarding the welfare of all children seriously. The designated persons for safeguarding children is the Headteacher who can be contacted via the school office on 01462 629123

Please find useful information updated weekly

Mythbusters

Myth: "I am the only one who can decide what is healthy for my child's lunchbox."

Buster: OFSTED expect schools to promote healthy lifestyles. Schools are expected to record instances on their *CPOMS that are harmful to a child's health or development. We can offer ideas and support with family support.

*Child Protection Online Management System

If you are concerned about a child outside of school you can phone 999 in an emergency or 101 to make a report.

The NSPCC operated an urgent helpline on 0808800500

Healthy Me Day

Our Healthy Me Day was a great success and the children enjoyed making their own smoothies using the smoothie bike. They learnt about the importance of a balanced diet and healthy teeth. May we take this opportunity to remind parents of the importance of a healthy packed lunch. This should include many of the different food groups and avoid sugary treats as much as possible, instead opting for fresh fruit and vegetables.



Harvest Festival



Thank you to everyone that donated food towards the Harvest Festival as you can see we have quite the collection. Preen collected the food on Thursday which was gratefully received. Special thank you to Mr Whitmill who donated the Harvest Wheat Sheaf.



Drop off times—08.45—09.00am Collection times—3.20pm

The school office will be open from 8.30am to 3.45pm for any queries, please call 01462 629123 or email

schooloffice@shefford.cbeds.co.uk

Clubs available to book next half term. Please complete the online booking form on your Parentmail app



Shefford Lower School

Holiday Club

For children who attend Shefford Lower in Years 1-4



October Half Term

Monday 25th October 9.00am—3.30pm

OR

Tuesday 26th October 9.00am—3.30pm

Numbers are limited to 30 children per day on a first come first served basis.

£18.00 per day

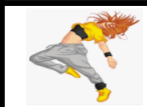
£12.00 per sibling

BOOK NOW !

Booking forms are available on Parent Mail or paper copies can be collected from the School Office.

KS1 and KS2 Clubs

Autumn Term 2
2021



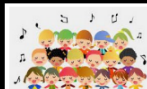
Dance Club Join Mrs Pearson for Dance Club where you will perform a range of different dances using a variety of moves and techniques to explore different songs.

WEDNESDAY – AFTER SCHOOL – KS2



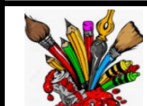
Gymnastics Club Join Miss Sharma and Miss Leary for Gymnastics Club where you will have fun exploring both floor and apparatus to learn and perform a range of different movements and skills.

TUESDAY – AFTER SCHOOL – KS1



Choir Club Join Miss Mansell and Mrs Lawson for Choir Club to learn a range of songs and singing technique to perform at various school and local events.

THURSDAY – AFTER SCHOOL – KS2



Art Club Join Mrs Kumar and Mrs Smith for Art Club to show your creative side whilst exploring a range of different styles and artists.

THURSDAY – LUNCHTIME – KS1



Recorder Club Join Mrs Lawson every week at recorder club. Children will learn the wind instrument, begin to read music and develop their overall music knowledge. A great instrument for beginners with great opportunity to progress.

MONDAY – BREAKTIMES – Year 1 & 3 THURSDAY – BREAKTIMES – Year 2 & 4



P.E. Club Join Mr Tilbury every week at P. E club.

- Monday—Year 1
- Tuesday—Year 2
- Wednesday—Year 3
- Thursday—Year 4

Weekly Good News Calls

Here are the children whose parents and carers have received a phone call home this week to let them know how well their child has been working and showing their school values. Keep up the good work Shefford Lower.

Reception

Pear—Harry, Plum— Eddie E & Eddie M, Peach—Mia

Year 1

Chestnut—Cara, Holly—Hayden, Sycamore—Jackson

Year 2

Maple—Reagan , Willow—Emily, Oak—Poppy

Year 3

Cedar—Oliver, Hawthorn—Marley, Elm—Caidan

Year 4

Ash—Ekam, Hazel—Arrianna, Beech—Mary



Shefford Sporting Successes

We celebrate children's sporting successes from home as well as those in school. Please send us photos of your child's certificates and/or medals which will be displayed on our PE celebration board and celebrated in assembly. Well done to these children who have shared their sporting success this week.

Air House	Daniel—Swimming, Poppy—Gymnastics, Izzy—Football, Sophie—Gymnastics, Frankie—Football, Sienna—Gymnastics, Nancy—Swimming, Abhinaya—Gymnastics, Kayleigh—Gymnastics & Evie—Gymnastics
Earth House	Emily—Gymnastics, Poppy—Gymnastics, Poppy—Swimming & Daisy—Gymnastics
Fire House	Raith—Taekwondo
Water House	Paige—Gymnastics, Bobby—Taekwondo, Grace—Swimming & Connie—Swimming Joshua—Triathlon



Congratulations to the children below who have been recognised as a Finer Diner this week for displaying good manners and values at lunchtime

THANK YOU

EXCUSE ME



Reception

Samantha, Albie, Harriet, Seb, Jude, Rory, Joshua, Nancy, Aiden, Toby, Alice, Max, Eddie M & Kovah

Year 1

Delilah, Logan, Connie, Macie, Jackson, Sam N & Amelia

Year 2

Edward, Effie, Eva & Serafina

Year 3

Bethan, Emily, Mylah, Jensen & Laila H

Year 4

Maia

PSA News

Our next meeting is on **Thursday 18 November**

Recent news

We had our first meeting of this academic year last Wednesday and enjoyed it being face to face after 18 months of video meetings.

It was a great opportunity for us to discuss all of the exciting events coming up at school this term.

Thank you to everyone who has ordered Christmas cards and other products from Cauliflower Cards. Be on the lookout for more information over the coming months about Present Day, a Christmas raffle and other fundraising initiatives.

There will also be members of the PSA at events this term such as Parent Consultation Evenings, Curriculum Meetings and the Christmas Concerts. Please come and chat to us about how the PSA supports your children and what you may be able to do to help us.

How to support the PSA

Help us raise **FREE** funds for

Sheffield Lower School PSA

every time you **shop online**

Just search for us on easyfundraising.org.uk



DINO BANK

You'll find him in the school entrance.

He's always hungry and is kept happy by feeding him your spare change!

Thank you



How the lottery works



£1 per ticket

That's right, unlike many other lotteries, our lottery tickets are only £1 per week.



Help us do more

For every ticket you play, 76% goes to our school and prizes.



£25,000 grand prize

Match all 6 numbers and you win the JACKPOT!



A big thank you to everyone for your continued support of our PSA

Community News

Please note, the following events/activities are run independently of Shefford Lower.




Was your child born between 1 September 2017 and 31 August 2018?
They will start school in September 2022, so you need to apply for a school place by 15 January 2022.

Apply online at www.centralbedfordshire.gov.uk/admissions

You can also complete a paper application form which is available from your local school or by contacting School Admissions admissions@centralbedfordshire.gov.uk 0300 300 8037

A great place to live and work.



MORE ABLE MUSICIANS

THREE WORKSHOPS
 15/11, 29/11, 13/12
 3:45-5pm
 ONE PERFORMANCE
 15/12
 6:30pm

OPEN TO YEARS 4-6

Best Academy Trust's Lead teacher of Music is throwing back the doors and opening up the stage of Etonbury Academy.

Any student in years 4, 5 or 6 who is currently having instrumental lessons can sign up, bring their instruments to Etonbury Academy and come together in a 'secondary teacher' community performance.

Email Music@bestacademytrust.co.uk for sign up details

FREE OF CHARGE



SUPPORT OUR LOTTERY TODAY

£1 per week
 Weekly cash prizes
 £25,000 jackpot

How it works...

It's simple—choose 6 numbers between 0-9 and if they match the weekly lottery draw, you win great prizes. One of our players will win a cash prize every week, maybe even the £25k jackpot! Tickets cost just £1 per week and the proceeds are donated to Shefford Lower School.

Every Saturday at 8pm the numbers are drawn and posted online. Winners are notified by email and winnings paid into the account of your choice.

The easiest way to join our lottery is online by direct debit or debit card.

It's so easy to join and will make a real difference to Shefford Lower School

Splitting the £1.00

- 40p goes to our school
- 36p goes to cash prizes
- 20p goes to admin costs
- 4p goes to VAT

The Maths... 100 tickets sold a week means
 - £30 weekly cash prize
 - £2,080 a year for our school

Buy A Ticket

Supporters must be 16 years of age or older

Please follow the link for application guidance
[**Application Guidance**](#)




BOOK A FREE TRIAL CLASS TODAY!

WE MOVE. *WE DANCE* WE GROW.



Bilingua Sing
 Love Learning Languages

Language Clubs



“ The children really enjoy their classes and can often be heard singing the songs in the corridors and the playground!
 Gemma Donnelly, Head Teacher, Braywick Court School, Maidenhead **”**

bilinguasinging.com



Children's Community Health HUB

Your one stop contact point

0300 555 0606

cca.bedsandlutonchildrenshealthhub@nhs.net

Open 9am-5pm every weekday (excluding BH)

New contact number and email address for the Beds and Luton 0-19 services, including:

- Health Visiting
- School Nursing

New contact number for:

- Luton Community Paediatric services (Edwin Lobo Centre)
- Beds and Luton Looked after Children's services

Health HUB - a single contact point, making it easier for you to get in touch with us.




Half Term OCTOBER HOLIDAY CLUB!

DAWNUNTILDUSK
 MORE AFTER SCHOOL & HOLIDAY CLUB
holidayclubs@kiddowindmill.co.uk

Our fantastic holiday clubs are back again..

October half term - Monday 25th October - Friday 29th October plus Teacher Training Day Monday 1st November.
 At Lakeview Pre-School, Wixams and Shortstown Primary School, Shortstown.
 Book early to avoid disappointment and catch our early bird offer.



October Half Term FOOTBALL CAMP

Join us for our October Half Term Football Camp
 October 28th - 28th 2021
 Pendleton Sports Centre
 Stotfold



Limited Places Available

10% discount for siblings, NHS, Police and Military Personnel

Held at Pendleton Sports Centre, Stotfold
 Camp drop off 10am, pick up 3pm
 Available to players between the ages of 4-15 years
 Delivered by UEFA B and FA Licenced Coaches

Book Today:
 Head over to www.midbedsfutsal.co.uk
 Send us an email: midbedsfutsal@gmail.com

Shefford Lower School

Diary Dates

(further dates will be added and these will be in bold italics)

Autumn Term 2021

12th October	Year 3's Celtic Harmony Trip
19th and 21st October	Consultation Evenings
20th October	Individual School Photos
22nd October	PSA Mufti Day (£1 Donation)
25th—29th October	Half Term
1st November	Inset Day
<u>4th November</u>	<u>Curriculum Evening</u>
4th November	Diwali Day
9th and 10th November	Year 1's Shuttleworth Trip
12th November	Children in Need Fundraiser
15th—19th November	Anti Bullying Week
<u>2nd December</u>	<u>EYFS Christmas Concert PM</u>
<u>3rd December</u>	<u>EYFS Christmas Concert AM</u>
<u>8th December</u>	<u>AM KS1 Christmas Concert</u> <u>PM KS2 Christmas Concert</u>
<u>9th December</u>	<u>AM KS2 Christmas Concert</u> <u>PM KS1 Christmas Concert</u>
<u>10th December</u>	<u>PSA Present Day</u>
<u>14th December</u>	<u>Christmas Dinner Day</u>
<u>15th December</u>	<u>EYFS Christmas Party and Santa</u>
<u>16th December</u>	<u>KS1 (AM) and KS2 (PM) Christmas Party and Santa</u>
<u>17th December</u>	<u>Carols on the playground and End of Term</u>
<u>6th June 2022</u>	<u>Extra Bank Holiday to mark The Queen's Platinum</u>

Please refer to our school website for the Academic Calendar for 2021/2022

[Term Dates Links](#)