



Weekly Update

Friday 4th February 2022



Please email schooloffice@sheffield.cbeds.co.uk if you require support in accessing this newsletter in an alternative format.

Dear Families and Friends

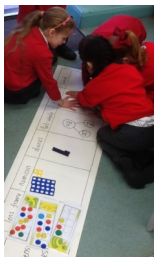
It is nice to be able to report to you that we are seeing a plateau of numbers regarding the localised outbreak of Covid that has been experienced in school since January. Your support with our measures and continued good communication has been very helpful so far.

Our measures in school remain robust, and we will continue these into next term with virtual assemblies and bubbles, until our regular evaluations allow us to communicate that this can reduce.

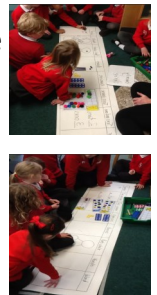
Next week we will be meeting families to discuss children's progress in our consultation sessions. We have been able to offer a hybrid of virtual and of face to face sessions. Our measures for safety are such that face to face sessions can only be for one parent at a time, and face coverings must be worn. Thank you in advance for respecting this.

In School we have been delighted to know the national data that has emerged since schools submitted phonics data for Y2 in Autumn. We knew we had done well from local information, but I'm thrilled to say that Sheffield Lower School exceeded outcomes nationally too.

Our Art Gallery and Museum is shaping up. The children are exposed to great works of art in our corridors, and our timeline on the playground. We now have cabinets in place and artefacts being bought to develop this wonderful resource in house. The team working on this will be sharing items with you through our newsletter and social media too. This is a long term project we are developing over time, and the PSA are working towards a section of this project too. The aim is that Sheffield Lower School has a wide range of learning experiences accessible to all, and ultimately, that we can offer those resources to benefit the wider community. As you know community is at our heart.



Each day I am outside and around our school—restrictions permitting—and I have been delighted to see the learning that is taking place. Following investment in resources, supported by our PSA, the drive to ensure maths is practical and progressive, children are using these exceptionally well in lessons. Mr Bowen shared how we teach maths in our curriculum evening, and is always happy to share this further.



Our eco club are busy organising the composting, and we have a much tidier playground with fewer wrapped items coming in. Thank you for supporting us to keep this healthy and litter free approach.

Have a wonderful week.

Regards

Mrs Finch



Values

The values of February will be Love & Kindness

"Carry out a random act of kindness with no expectation of reward knowing someday someone will do the same for you." Princess Diana.

What is love? How it is shown through our acts of kindness, and being thoughtful to one another.

House Points and Attendance

W/E 28/01/22

House Points

Air— 1140
Water—938
Fire—903
Earth—859

House Attendance & Punctuality Winner

Water



Arriving to school on time

When pupils arrive late, they miss out on essential instructions given at the beginning of the lesson.

This can significantly reduce achievement, regardless of academic ability. Your child may also feel awkward arriving to the classroom when everyone else is settled. Furthermore, when one pupil arrives late, it disrupts the entire class and the teacher—everyone's education is compromised.

5 minutes late a day = 3 DAYS OF SCHOOL LOST A YEAR

10 minutes late a day = 6.5 DAYS OF SCHOOL LOST A YEAR

15 minutes late a day = 10 DAYS OF SCHOOL LOST A YEAR

20 minutes late a day = 13 DAYS OF SCHOOL LOST A YEAR

30 minutes late a day = 19 DAYS OF SCHOOL LOST A YEAR



Thank you for your kind donations so far. We have added some more items to our Amazon wish list that will greatly benefit your children with their learning this year. If you would like to purchase a book for our school please click [here](#)



Please let the office know if you need assistance or adjustments for any disability.

Blue badge holders can access the staff car park.

Safeguarding Information

At Shefford Lower School we take our responsibilities to promote safeguarding the welfare of all children seriously. The designated persons for safeguarding children is the Headteacher who can be contacted via the school office on 01462 629123

Please find useful information updated weekly

Safer Internet day is on the 8th February 2022. Please find some useful links for guidance on how to protect your child's devices

<https://saferinternet.org.uk/safer-internet-day/safer-internet-day-2022>

<https://saferinternet.org.uk/guide-and-resource/parents-and-carers>

<https://www.thinkuknow.co.uk/parents/home-activity-worksheets/early-years/>

<https://www.thinkuknow.co.uk/parents/Concerned-about-your-child/Online-contact-and-staying-safe/>

If you are concerned about a child outside of school you can phone 999 in an emergency or 101 to make a report.

The NSPCC operated an urgent helpline on 0808800500

Gorgeous George One Big Fight



We are holding a Sponsored Danceathon on the 22nd February 2022 where each class will be dancing for 22 minutes to raise money for the Gorgeous George—One Big Fight appeal.

Please look out for Sponsor forms in your child's book bags.

Thank you for your support

Link to the Gorgeous George fundraising page is here

https://www.gofundme.com/f/GorgeousGeorgeOneBigFight?utm_campaign=p_cp+share-sheet&utm_medium=copy_link_all&utm_source=customer

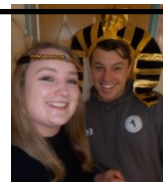
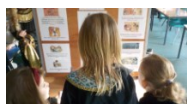
Year 3 Egyptian Day

Year 3 had an amazing, immersive experience with their visitor from Portals to the Past on Wednesday. They enjoyed completing a quiz, playing an Ancient Egyptian board game, and looking at some real artefacts from Egypt before spending some time learning about the role of a Pharaoh and the process of mummification. The day finished with a hunting competition using javelins to knock down animals and score points, even the teachers joined in! Cedar class won the game...

It was a very fun and interesting day, I enjoyed learning with Mark aka Howard Carter

I loved the hunting competition and playing the hounds and jackals game

I also liked the hounds and jackals game and the hunting. I learnt that the heart was measured after it was removed from the body during the mummification process.



**NHS Healthy
Scanner App**

Lunchbox tips



Switch the sweets

Swap cakes, chocolate, cereal bars and biscuits for malt loaf, fruited teacakes, fruit breads or fruit (fresh, dried or tinned – in juice not syrup).



[Salmon and salad
bagel](#)

For this recipe please
follow this link

[Lunchbox](#)

[Recipe](#)



Shefford Lower School

Holiday Club

For children who attend Shefford Lower in Years 1-4



February Half Term

Monday 14th February 9.00am—3.30pm

Tuesday 15th February 9.00am—3.30pm

Numbers are limited to 30 children per day on a first come first served basis.

£18.00 per day

£12.00 per sibling

BOOK NOW !

Booking forms are available on Parent Mail or paper copies can be collected from the School Office.

Weekly Good News Calls

Here are the children whose parents and carers have received a phone call home this week to let them know how well their child has been working and showing their school values. Keep up the good work Shefford Lower.

<u>Reception</u>	Peach—George, Plum—Lucas, Pear—Arthur
<u>Year 1</u>	Holly—Martha, Chestnut—Caitlyn, Sycamore—Lumen
<u>Year 2</u>	Willow—Daisy & Forrest, Maple—Cayden
<u>Year 3</u>	Elm—Freddie & Edie, Cedar—Jake, Hawthorn—Grace
<u>Year 4</u>	Hazel—Kairo, Beech—Bailey, Ash—Shae



Shefford Sporting Successes

We celebrate children's sporting successes from home as well as those in school. Please send us photos of your child's certificates and/or medals which will be displayed on our PE celebration board and celebrated in assembly. Well done to these children who have shared their sporting success this week.

Air House	Kayleigh—Gymnastics, Daisy—Swimming, Abhinaya—Gymnastics, Poppy—Gymnastics
Water House	Connie—Gymnastics, Livvie—Swimming & Gymnastics, Paige—Gymnastics
Earth House	Emily—Gymnastics, Ollie—Football, Daisy—Gymnastics
Fire House	Eleanor—Dance, Thea—Gymnastics



Congratulations to the children below who have been recognised as a Finer Diner this week for displaying good manners and values at lunchtime

EXCUSE ME

THANK YOU

<u>Reception</u>	Ben, Amber, Lily, Harry, Aiden, Ben, Noah, Bella & Lacey
<u>Year 1</u>	Zoe, Louie, Jayda, Amelie, Althea, Blake, Lumen & Elodie
<u>Year 2</u>	Georgia, Poppy, Scarlett & Daisy
<u>Year 3</u>	Alexandra, Imogen
<u>Year 4</u>	Isla, Jacob, Theo, Abhinaya, Kiera & Kairo



Sheffield Lower School PSA
December - January 2022 Update

Welcome to our new look monthly update. Here we aim to tell you everything that has been going on with the PSA each month.

Firstly, a big **THANK YOU** to everyone who has supported the PSA over the last month either by buying raffle tickets, lottery tickets, ordering Christmas cards or supporting us in the many other events we took part in.

December was a busy month; January always tends to be quieter but we are looking forward to our first PSA meeting of 2022 soon.

If you are keen to find out more, please contact the office for our details and we will always be pleased to tell you more about being involved in the PSA.



Throughout November to January we raised just over **£3,500!!**

Our biggest fundraiser was the Cauliflower Christmas Cards at £717! - a massive thank you to everyone who ordered products. We hope you were all pleased with the results along with everyone they were gifted to during the Christmas period.

We also raised £600.53 in the raffle, £536.40 at the Christmas light switch on £367.40 at Present Day, £98.40 through School Lottery and £55 from loose change donations.

Another big thank you to Lloyds who donated £980!!

If you work for a company that offers match funding, then please get in touch as it is a relatively easy way for us to add a massive boost to our funds.



We were also pleased to donate £500 for the Pantomime the students enjoyed in December and £491.04 on books for Santa to deliver to each student to put under their tree.

We are excited this year to bring you all the favourite fundraising activities we have enjoyed in the past plus some new ideas linked with the Dinosaur trail we are helping to fund. If you have any ideas of exciting events you would like to help with then please get in touch.

Thanks again for all of your support.

Look out for the next update at the beginning of March.



Community News

Please note, the following events/activities are run independently of Shefford Lower.



JACK COLLISON
FORMER WEST HAM AND WALES INTERNATIONAL FOOTBALLER

FEBRUARY HALF TERM CAMP!
FOOTBALL, COMPETITIONS, FUN AND PRIZES FOR BOYS AND GIRLS AGED 5-13!

MONDAY 14TH - THURSDAY 17TH FEBRUARY, 10.00-15.00
ROBERT BLOOMFIELD ACADEMY, SG75BU
12.3 AND 4 DAY TICKETS AVAILABLE
*** ONLY 60 SPACES AVAILABLE ***
BOOK ONLINE NOW!

NEW! 10% off for **ALL SLS** students—use code **JCSSSCHOOL10** at the checkout

[Jack Collison Soccer School »](#)
[SHEFFORD HALF TERM CAMP](#)



DEVELOPMENT THROUGH DRAMA

One of the greatest life skills we can give our children is the ability to communicate confidently.

ROLEPLAY is vital to a child's development and increases social interaction, problem solving and communication skills. Through imaginative play, we explore emotions and feelings which helps to boost **WELL BEING** and **SELF-AWARENESS**.

WE GUARANTEE YOUR CHILD WILL DEVELOP ESSENTIAL SOCIAL SKILLS THEY WILL NEED IN EVERYDAY LIFE.

WHAT ARE OUR COURSES?
• ANNUAL IN-PERSON COURSE
• 10 WEEKS OF THERAPY
• ANNUAL ONLINE COURSE
• ANNUAL ONLINE COURSE
• ANNUAL ONLINE COURSE

Our internationally acclaimed Drama Academy benefits tens of thousands of children around the world each week. Each class follows a curriculum designed by world-class experts.

CONTACT US TO SECURE YOUR FREE TRIAL CLASS:
Email: info@developmentthroughdrama.co.uk
Phone: 01753 818181 Email: info@developmentthroughdrama.co.uk
Office: 100 The Meadows, Leeds LS2 9PQ (near your local station)
For children aged 4-18
www.developmentthroughdrama.co.uk

40 YEARS
1979-2019

[Click for more information](#)



Start your journey with Mid Beds Futsal
It's all about the journey, not the outcome.

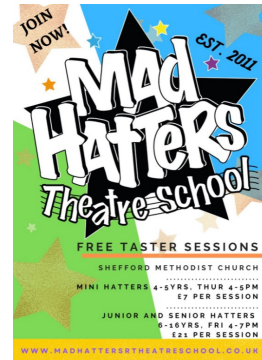
ROBERT BLOOMFIELD ACADEMY
FUTSAL

4-4 Years: 6-7pm (MUGA)
Limited places available - contact us on midbedsfutsal@gmail.com to book a place

Why Mid Beds Futsal and Football?
• Fun and creative environment
• FA Affiliated Licensed Coaches
• CBI Checked
• Player reach ratio to maximum player development
• 30% Sessions 70% Matches
• Popular

midbedsfutsal@gmail.com

[Click for more information](#)



MAD HATTERS Theatre School
EST. 2011

FREE TASTER SESSIONS
SHEFFORD METHODIST CHURCH
MINI HATTERS: 4-5 YRS, THUR 4-6 PM
7 PER SESSION
JUNIOR AND SENIOR HATTERS: 6-16 YRS, FRI 4-7 PM
6.20 PER SESSION

www.madhatterstheatreschool.co.uk

[Click for more information](#)



Coffee afternoon with SEND support

Do you have a child aged 0-25 years with a disability, additional need or not yet diagnosed?

Join us at our coffee afternoon to meet other local families, share ideas and support each other in a friendly environment, come along with or without your child

Monday 10th January
Monday 14th February
Monday 14th March
1.30-2.30

Shefford and Stotfold Children's Centre 0300 300 8112
Email: info@stotfoldchildrenscentre.com or info@stotfoldchildrenscentre.gov.uk



February Half-term Holiday Camps

On our camps, our fully qualified coaches ensure every child is safe while they move, play and make new friends. Make their half-term fun, physical and one to remember!

BOOK NOW AT:
premier-education.com/holiday-camps

Follow us on social:
[@premiereducationUK](https://www.facebook.com/premiereducationUK)

[Click for more information](#)



February 2022 Camp

JOIN IN THE FUN AT OUR

Tennis, Dance, Go Kart, Nerf, Baking, & More

Feb 14th - 18th
Templeton Lane School
Longdon Manor
Milton Keynes
Home and elsewhere

Feb 21st - 25th
Barnby Cherry Fields
Wilton Primary School
Great Linford Primary School
Tadworth Park Primary School

SPORTY SCHOLARS
BOOK NOW www.sportyscholars.com Tel: 07511194519

[Click for more information](#)



CAMPTON SCHOOL OF DANCE

WELL-ESTABLISHED SCHOOL WITH A TRADITION OF EXPERIENCE AND SKILL, OUT THERE TO INSPIRE YOUR CHILD

CAMPTON SCHOOL OF DANCE PROVIDES CLASSES IN BALLET, TAP AND MODERN JAZZ

Lessons are held in Bedfordshire in Shefford at the Methodist Church Hall, Cornhill at the Village Hall and the Community Hall at Fairford Park near Letchworth

For more information contact us on:
T: 07765 944495
E: info@camptondance.co.uk
W: www.camptondance.co.uk

Follow us on Facebook: [CamptonSchoolOfDance](https://www.facebook.com/CamptonSchoolOfDance)
We are on YouTube: [CamptonSchoolOfDance](https://www.youtube.com/CamptonSchoolOfDance)
We are on Instagram: [CamptonSchoolOfDance](https://www.instagram.com/CamptonSchoolOfDance)
We are on Twitter: [CamptonSchoolOfDance](https://twitter.com/CamptonSchoolOfDance)

[Click for more information](#)



Central Bedfordshire Libraries

Booster Cushion Theatre for Children presents
Big Goldilocks and the Three Bears Plus

Wed 16 Feb
11am & 2pm at
Shefford Town Memorial Hall

Ideal for families with children aged 4-9

Show lasts approx. 40mins
please bring your own rug or picnic blanket to sit on in the Hall

Tickets cost £2 each (family discounts available)
Buy online at
<https://bit.ly/CBCLibrariesEvents>
or in person at Shefford Library



Central Bedfordshire Libraries

Booster Cushion Theatre for Children presents
Big Goldilocks and the Three Bears Plus

Wed 16 Feb 11am & 2pm
at STMA, Shefford Town Memorial Hall

This fun retelling of Goldilocks and the Three Bears is ideal for families with children aged 4-9. The comical story is retold through a massive 6ft tall book complete with pop ups and props coming out of the book!

Show lasts approx. 40mins

Please bring your own cushions or picnic blanket to sit on in the hall

Tickets cost £2 each (family tickets available)
Buy online at
<https://bit.ly/CBCLibrariesEvents>
or in person at Shefford Library

[For tickets to this event, please follow this link](#)

Shefford Lower School

Diary Dates

(further dates will be added and these will be in bold italics)

Spring Term 2022

8th February	Safer Internet Day
8th and 10 February	Parents Consultation Evenings
11th February	Year 4 Bikeability
14th—18th February	Half Term
W/C 21st February	Year 3 Swimming lessons begin for 6 weeks
14th—18th March	Science Week
16th March	Year 1 Woburn Trip
18th March	Red Nose Day
21st March—1st April	Big Walk and Wheel to school days—We want to encourage more families to travel to school actively, to help create healthier and happier communities
30th March—1st April	Year 4 Residential Trip
1st April	Last day of Spring Term
19th April	SUMMER TERM Begins—Children Return
27th April	Whole Class Photos
6th June 2022	Extra Bank Holiday to mark The Queen's Platinum

Governor's News

As we move into the final phases of this academic year the Governing Boards focus has been to support the school through these unprecedented times. This has been a big focus for us as governors, particularly on the recovery of the students learning journey. Shefford Lower School strives for excellence and are committed to a policy of inclusion, well-being, and education of all pupils. We believe in the potential of all children and take seriously our responsibility to enable them to achieve their very best. We will endeavour to make sure the school focus is on progress and recovery as we move into the next academic year.

We are working closely with the Local Authority and School to ensure that the two-tier transition is at the forefront of plans and ensure that this happens smoothly for every child. We will keep you updated on any further developments.

If you are interested in a position within our Governing Board, please email the school office. Further information regarding positions will be communicated within the Shefford community this term.

Moving to become a primary as part of Central Bedfordshire's Schools For The Future project.

<https://www.schoolsforthefuture.co.uk/>

Drop off times—08.45—09.00am

Collection times—3.20pm

The school office will be open from 8.30am to 3.45pm for any queries, please call 01462 629123 or email

schooloffice@shefford.cbbeds.co.uk

Please refer to our school website for the Academic Calendar for 2021/2022

[Term Dates Links](#)