



Weekly Update

Friday 28th May



Please email schooloffice@shefford.cbeds.co.uk if you require support in accessing this newsletter in an alternative format.

Dear Families and Friends,

It has been a very long half term, and with the children previously having a locked down experience, this was quite a long haul for them. So, I want to praise them all for their stamina, and of course the learning attitudes they have shown since returning after 8th March. We have worked tirelessly to put in interventions and supports, and our children have responded to these very well. English has been a strong focus, particularly in the area of phonics. We will be providing some activities for children in Key Stage One that you might like to try at home, and teachers are ensuring your children's phonic stage is sent home also. Do keep your eye on our facebook page, as we do post there for you in the holidays too.

Please keep an eye out for communications from our office to join our open evenings for Cherry, Peach, Plum and Pear classes. These will come via Parentmail.

I had the pleasure this week of our 'Parent Focus Group' this week. The agenda being 'Schools For The Future' - SFF—which is the name Central Bedfordshire have given to the plan in the locality for schools to become two tier (primary and secondary). We are still looking to grow this group into September, and ensure new parents have the opportunity to join. This group of parents enables us to have an insight into how communication about SFF is being understood in the community, and what information we as a school can bring to support. We also have a project map in school for the areas of change, some of which we can share, some of which is internal. As far as is possible, ensuring parent voice on these issues is key to us making more discerning choices, so the parent focus group will discuss various agenda items throughout next year.

In this week's meeting, our parents told me what they hold dear about Shefford Lower School, and also what they hope we will be able to offer into years 5&6. I shared the various headings on our project map that can be public with a view to working through those headings in the two years leading up to September 2023. Shefford Lower School as a primary school has ambition to be an excellent offer and continue to deliver on the things you hold dear. In this meeting we heard how you value the enriched curriculum especially our forest school, and the sporting opportunities. You would like to see increased sporting and after school activities as we take in years 5 and 6. You value the family support work and the speedy responses that our office team provide, and you would want us to expand the support offer to ensure it remains as good. You also want us to have a focus on the curriculum for music and modern foreign languages.

We will be resourcing the curriculum, and governors have put aside budget to ensure that this is a priority, alongside ensuring that staff have expertise within years 5 and 6 so that the academic offer is strong. We are keen to ensure there is a level of choice and autonomy given to our older children, and that the safety policies and processes take into account their growing needs and independence. We are already thinking about the way the school trips/residential will be channelled, as this affects our current year 2 children, who will have a different offer, as they will be our first children moving through the full primary journey with us.

We aim to have a regular communication letter out to you that is sharply focussed on SFF issues, which will be from myself and our Chair of Governors. We are aware that the 'how' is not fully understood, in terms of year groups, and I have added a page to this newsletter which we will share again. As soon as we are allowed, we will arrange a meeting for families, so that you can ask questions and see a presentation. We don't have the answers to all of your questions, as the full plan is not finalised at Central Bedfordshire yet, but we will revisit questions as they arise too. Do therefore, express your interest in joining our focus group. We are aiming to have a couple of parents from each class, so that we represent the parent voice as wholly as possible. It is exciting times, and we have some exciting plans in the pipeline.

With the holiday break ahead now, I am reminding all parents to refresh parental controls on devices at home. Please reach out if you have questions and we can sign post where help for this can be found. I would also ask that families remind children about safety near roads and how to be safe in places such as parks and playing outside. It has been a while since children had the freedoms that are permitted this week, and a reminder never hurts.

Have a safe week everyone.

From Mrs Finch.

Schools For The Future

Going primary

FAQ—How will the change happen?

We will move from a three form entry school into a two form entry school. For a while we have more classes, and so there will be temporary space provided by Central Bedfordshire Council.

Year		Number of classes in each school year group								
		Cherry							Total	
		Nursery	Reception	Year 1	Year 2	Year 3	Year 4	Year 5	Year 6	Classes
Sept	2022	unchanged	3	3	3	3	3			15
	2023	unchanged	2	3	3	3	3	3		17
	2024	unchanged	2	2	3	3	3	3	3	19
	2025	unchanged	2	2	2	3	3	3	3	18
	2026	unchanged	2	2	2	2	3	3	3	17
	2027	unchanged	2	2	2	2	2	3	3	16
	2028	unchanged	2	2	2	2	2	2	3	15
	2029	unchanged	2	2	2	2	2	2	2	14

Children will stay with us once they join us, and the change to a two form entry will be gradual. For a while we will have extra classes, which the council describe as 'bulge years'. Funding is provided to buy resources and furniture.

Values

The values from May 4th —May 28th are **Thoughtfulness & Patience**

“Be a rainbow in somebody else’s cloud” Maya Angelou.

Thinking of others and putting their thoughts before our own. Thinking of the needs of others & giving time and space to support them. Enduring hardships and difficulties to achieve your goals.

House Points and Attendance W/E 21.05.21

Well done to last week’s house winners.



House Points



Earth—1365
Fire—1340
Air—1159
Water—1082

House Attendance & Punctuality



Water—98.94
Fire—96.82
Air—96.59
Earth—95.38



Amazon Wish List



Just a reminder about our Wish List on Amazon! It contains carefully selected books and resources which we know will greatly benefit your children with their learning this year. If you wish to purchase a book for our school, please use the link below to find the full list:

https://www.amazon.co.uk/hz/wishlist/ls/2ZZUJD59NIDQ7/ref=nav_wishlist_lists_1?encoding=UTF8&type=wishlist#

This list is updated by staff throughout the year and can be accessed by anyone. We’ve made it really easy to donate a book to the school:

You can choose to get the books delivered directly to the school office or if you wish you can add it to your personal shopping and simply bring it in.

Thank you so much for your help with this matter. Your donations will be gratefully received and the children will benefit massively.



Myla in year 3 is challenging herself to walk, run and scoot 100 miles starting on the 1st of June to raise funds for The Royal National Orthopaedic Hospital Charity after being diagnosed with Scoliosis. If you would like to read more about her story and donate please follow the link below.



[Myla’s Gofundme page](#)



Theo from Peach Class earned a Head Teacher's award this week for his amazing sewing, showing us some fantastic fine motor skills.



Music News



Abhinaya passed her Grade 2 piano exam this week with Merit. This is a fantastic achievement. Well done.

Matthew in Ash class has just finished writing his 1st book and I can tell you it was a real page turner..

'Twitty The Robin and the Red Eye's battle'

Well done Matthew we will look forward to reading more of Twitty the Robins adventures.



Well done to all of the children in Year 3 and 4 who took part in an athletics festival in school yesterday.

All of the children had a go at throwing, standing long jump, 400m and a 50m sprint and did a fantastic job!



Please see the list of Clubs on offer for years 1 to 4 after half term.

If you would like to book your child a place please complete the Parentmail form by 7th June.

Summer Term 2 2021	Clubs Year 1 and 2	Summer Term 2 2021	Clubs Year 3 and 4
	<p>Dance Club Join Mrs Pearson for Dance Club where you will perform a range of different dances using a variety of moves and techniques to explore different songs.</p> <p>TUESDAY – AFTER SCHOOL – KS1</p>		<p>Coding Club Join Mrs Kumar in Coding Club to investigate and explore with code to create your own computer games and programmes. You will use reasoning and problem solving skills with different software to further develop your understanding of code.</p> <p>TUESDAY – LUNCHTIME – KS2</p>
	<p>Science Club Join Miss Hass and Miss Mansell for Science Club where you will have fun exploring, investigating and observing through different practical experiments.</p> <p>TUESDAY – AFTER SCHOOL – KS1</p>		<p>Drama Club Join Mrs Metcalfe and Mrs Carter for Drama club where you will read, perform and explore your inner actor through drama based games and activities.</p> <p>TUESDAY – LUNCHTIME – KS2</p>
	<p>Art Club Join Miss Sharma and Miss Leary for Art Club to show your creative side whilst exploring a range of different styles and artists.</p> <p>WEDNESDAY – AFTER SCHOOL – KS1</p>		<p>Press Club Join Mr Wakefield in Press Club where you will learn about how newspapers and news broadcasts are made and have a go at creating our very own school newspaper and news reports.</p> <p>THURSDAY – LUNCHTIME – KS2</p>
	<p>Healthy Living Club Join Mrs Jenkins and Miss Miller for Healthy Living Club, where you will have fun exploring different ways to stay fit and healthy. Find out how to keep you whole body and mind healthy by trying out new exercises and creating your own healthy snacks.</p> <p>THURSDAY – AFTER SCHOOL – KS1</p>		<p>Technology Club Join Mr Bowen for Technology Club where you will use planning, designing and evaluation skills to create your own ideas and solve existing problems.</p> <p>FRIDAY – LUNCHTIME – KS2</p>



Shefford Sporting Successes W/C 24th May

We celebrate children's sporting successes from home as well as those in school. Please send us photos of your child's certificates and/or medals which will be displayed on our PE celebration board and celebrated in assembly.



Well done to these children who have shared their sporting success with us this week

Water House

Toby—Rugby
Edward—Swimming
Bo—Dance

Fire House

Isla—Football
Stevie—Football
Isla—Swimming

Air Hosue

Poppy—Swimming



This week the children have been having a go at a hopscotch challenge. These are the children who made the most improvement over the week

Chestnut—Forrest and Sophie, Holly—Georgia and Serafina, Sycamore—Quinnon and Michelle, Maple—Alexandria and Giovanni, Oak—Lewie and Molly, Willow—Bethan and Noah, Cedar—Ellise and Blake, Elm—Harry and Maisie, Hawthorn—Heidi and Poppy, Ash—Jessica and Bethany, Beech—Phoebe and Hazel—Sophie and Reuben

Look out for your child's exercise diary coming out today. Please make note of your child's activity during the half term.... Lots of house points will be available for completing exercises and logging these during the half term week

Phone Calls Home

Teachers will be making phone calls home every week to let parents and carers know how well their child has been working and for showing school values! Keep up the good work Shefford Lower!

W/C 17/05/21



Reception

Peach — Jackson L

Pear — Frankie C

Plum — David

Year 1

Chestnut — Raith

Holly — Lyra B

Sycamore — Charlie C



Year 2

Maple — Laila H

Oak — Isabella

Willow — Rory



Year 3

Cedar — Lilly S

Elm — Georgie S

Hawthorn — Grace



Year 4

Ash — Tommy C

Beech — Alfie F

Hazel — Grace C



Finer Diners

Congratulations to the children below who have been recognised as a Finer Diner last week for displaying good manners and values at lunchtime:

Reception

Eva H, Leo B-B, Vinny F, Ezmee G,
Leon H, Elodie D, Mia N-P, Hayden K,
Annabelle W, Toby A and Aria C

EXCUSE ME



Year 1

Michelle O-M, Ben L, Quinnon G,
Vinny G, Esme T, Kiera H, Daisy L,
Lana C, Sophie B, Olivia R, Eva L,
Sofya C, Freddie H, Layton W and
Georgia S

THANK YOU

Year 2

Isabelle P, Rory M, Edie C, Isabella
F, Mia W, Lara R, Isla S, Ollie W,
Ethan W and Imogen L

Year 3

Lilly G, Tyler W, Maisie R, Niamh R,
Connie B, Freya A-P and Evie H





TEACHER OF MUSIC
2 days per week
Unqualified Teacher Scale (£18,169 - £28,735) MPR (£25,714 - £36,961)
UPR (£28,690 - £41,604) FTE
From September 2021

Shefford Lower School is a thriving, friendly, values based school with over 500 children on roll. Our school offers a very well-resourced and vibrant learning environment for both children and staff to develop and achieve their potential.

We have a long tradition of providing excellent opportunities for our children to enjoy and discover the benefits of music through learning instruments, being a member of the choir and other exciting activities. We are looking for a part-time teacher to work one or two days a week to deliver aspects of the music curriculum across our school and to continue prioritising music as a special part of learning. Some of the activities may be run before or after school and arranging after school concerts two or three times a year will be expected.

Applicants will either have qualified teacher status or have a track record of being able to deliver exciting, inspirational musical lessons and opportunities to groups of students. All applicants will need to be team players who have a passion to make learning fun and exciting and be prepared to work hard and be willing to embrace new initiatives and different ways of working. With the school moving to a primary in 2023, it will be important for you to know and understand what is required in the music curriculum in both Key Stage 1 and 2 to be ready for Key Stage 3 music.

We operate within a Framework for Ethical Leadership as a pathway school. Staff will be expected to embrace these principles which are available on our website.

Shefford Lower School is committed to safeguarding children and all appointments are subject to enhanced Disclosure and Barring Service Check.

Closing Date: Wednesday 23rd June 2021 at 9.00 am

Interview Date: Thursday 1st July 2021

Interested applicants should complete an application form which is available on the school's website: www.sheffordlowerschool.co.uk

Visits to the school are welcomed – please contact Paula Hudson on 01462 629123.

PSA News

Our next meeting is on **Thursday 17th June @ 7.30pm** via Zoom

Would you like to join the PSA?

During our meetings we discuss ideas for future fundraising and community events for the benefit of the children at Shefford Lower School.

Does this sound like something you want to be a part of?

Please contact us through the school office or via our Facebook page to find out more about the PSA.

Recent news

We are pleased to announce that with restrictions easing we are starting to talk about upcoming events – keep your eyes peeled for news after half term.

Also, we are pleased we have been able to help financially support the Year 4 Frontier Centre trip with a donation of £10pp to a total of £880 and also have agreed to donate £200 to purchase food and drink for a Tea Party for each class on their 'move up day' later this term.

How to support the PSA

Help us raise **FREE**
funds for

Shefford Lower School PSA

every time you **shop online**

Just search for us on easyfundraising.org.uk



DINO BANK

You'll find him in the school entrance.

He's always hungry and is kept happy by feeding him your spare change!

Thank you



How the lottery works



£1 per ticket

That's right, unlike many other lotteries, our lottery tickets are only £1 per week.



Help us do more

For every ticket you play, 76% goes to our school and prizes.



£25,000 grand prize

Match all 6 numbers and you win the JACKPOT!



A big thank you to everyone for your continued support of our PSA

Community News

Please note, the following events/activities are run independently of Shefford Lower.



HALF TERM FOOTBALL CAMP

Creativity, Confidence, Control, & Courage

JUNE 1st, 2nd, & 3rd

Including indoor & outdoor activities

We're now offering a payment plan to help you spread the cost.

Get in touch to find out more!

Join us for our half-term camp!

1 day: £20
2 day: £40
3 day: £50

- Held at **Pendleton Centre, Stotfold.**

- Camp drop off **10am**, pick up **3pm**.

- Available for players between the **ages of 5-15.**

- Delivered by UEFA B & FA licensed coaches.

Limited spaces available!

Book Today:

Head to our **website:**
www.midbedsfutsal.co.uk

Send us an **email:**
midbedsfutsal@gmail.co.uk



Free

Get
biking this
summer

Learn to Ride Lose the Stabilisers

Tuesday 1st June at Stratton Upper School

Eagle Farm Road, Biggleswade SG18 8JB
10-11am
11am-12pm

Get kids riding in a safe, off-road environment, supported by local Sustrans schools officer Alister Barclay.

Choose a one-hour time slot, then contact alister.barclay@sustrans.org.uk, 07917 084663 for further details and to sign up.



Our Holiday Camps near you...

Venue: Henlow Academy

Dates: Tues 1st - Fri 4th June 2021

Times: 08.00 - 16.00

Price: £80 - 4 day block booking (£20 per day)

Ages: Juniors (5-8 years) & Seniors (9-12 years)

Additional Info:

We will be continuing to work with a 'bubble' system to keep your child & our staff safe, following current guidance.

Taking every precaution

Our Activity Professionals have been undergoing additional training in order to provide the best care to the children under their supervision, specifically the Transcend Level 2 Award in Infection Prevention, Mitigation and Management.

They will need

- A packed lunch
- Plenty of water
- Suitable clothing for the weather
- Loads of energy!

Premier Education Promise: In the event these courses are cancelled, we will issue a full refund within 7 days.



To book now, visit
premier-education.com/holiday-camps
Follow our socials @PremEducationUK



'NEW' URBAN FOOTGOLE @ THE HUB

ALSO OPEN FOR HALF TERM ON FRIDAY 4th JUNE 2-4pm

BRAND NEW TO SHEFFORD NOW OPEN!

Challenge yourself to a fun mix of football and golf around our BRAND NEW 9 hole course, hitting targets and navigating obstacles along the way.

Fun for all the family.

Sundays @ Shefford Sports Club
1-3pm

£5 per person

Booking Essential @ www.thefootballhubltd.co.uk

Children's Community Health HUB

Your one stop contact point

0300 555 0606

ccs.bedsandlutonchildrenshealthhub@nhs.net

Open 9am-5pm every weekday (excluding BH)

New contact number and email address for the Beds and Luton 0-19 services, including:

- Health Visiting
- School Nursing

New contact number for:

- Luton Community Paediatric Services (Edwin Lobo Centre)
- Beds and Luton Looked after Children's services

Health HUB - a single contact point, making it easier for you to get in touch with us.

Launch of new Bedfordshire and Luton Children's Health Hub

What is the new Health HUB?

- The new Bedfordshire and Luton Children's Health HUB has been created to make contacting our services by telephone and email easier and more convenient.
- There will be one shared telephone number and email address to access services.

Which services are included?

The HUB will bring together all calls and emails for the following Teams:

- 0-19 Team across Bedfordshire and Luton
- Bedfordshire and Luton Looked After Children's (LAC) Services
- Luton Community Paediatrics Service (Edwin Lobo)

When does the Health HUB launch?

- The Health HUB will go live on Tuesday 1st June 2021
- The telephone number is : 0300 555 0606
- The email address is : www.bedsandlutonchildrenshealthhub.nhs.net
- The opening hours are 9-5 Monday to Friday. The Health HUB is closed at weekends and Bank Holidays

Reasons for contacting the new Health HUB

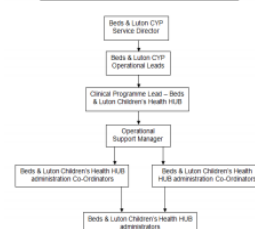
The Health HUB will be the first point of contact for each of the services it covers. Calls will include:

- Enquiries about appointments and support from School Nurses and Health Visitors
- Calls from professional partners such as GP Surgeries and Social Care Teams
- Help with accessing clinics

Meet the team

- The Clinical Programme Lead for the team is Lorraine Foster
- Team members are based in both Luton (The Poynt) and Bedford (Woburn Court)
- The Team will consist of Health HUB Administrators, Co-ordinators and an Operational Support Manager based across Bedfordshire and Luton

Beds & Luton Children's Health HUB Organisation Structure



Expanding the Health HUB

- The Health HUB will grow over time to include all CCS Children's Services across Bedfordshire and Luton
- We will contact you at each stage as Services move over to join the Health HUB contact point.

Is your child entitled to FREE milk?

Child under 5?

Every child under the age of five is entitled to FREE school milk.

Register your child online for FREE school milk today.

Child over 5?

Every child over the age of five is entitled to milk at a subsidised price of around £14 per term.

Register online now and you can pay straight away!



FREE and subsidised school milk

Register your child today!

Register your child for school milk today.

Sign them up in a few clicks...



Go online and quickly register your child for school milk at www.coolmilk.com



Need help? Contact our Customer Service team on 0800 321 3248 or via email at registrations@coolmilk.com



Family support Drop in

We provide a friendly service to families with children 0-12 years

No need to book a place, turn up on the day or call us for more information

Behaviour support

Child Development

Feeding support

Info on activities

Confidential support

Vitamins & Doidy cups

Speech and language

Fresh food products

Benefit and debt advice

Tuesday 9 - 12 @ Arlesey Youth Centre High St SG15 6SN

Wednesday 9 - 11 @ Shefford Children's centre School Lane SG17 5XA

Friday 9 - 12 @ Stotfold Children's centre Rook Tree Lane, SG5 4DL



Shefford and Stotfold Children's Centre S
0300 300 8112



Children Centres

Children centres provide high quality services to children, 0-12 years, and their families, in order to give every child, the best start in life.

- We offer:
- One to one family support
 - Relationship and conflict support
 - Advice on parenting and child development
 - Free safety in the home checks
 - Information and advice on childcare and funded places
 - Support from a speech and language therapist
 - Support for children with additional needs
 - Early education and school readiness
 - Vitamins and doidy cups available

Useful contacts

National Breastfeeding helpline number
0300 100 0212 Open 09.30 - 21.30

SPA Health Visiting and school nurse team
0300 555 0606 Monday - Friday 8am to 5.30pm

Parent line Text messaging service for parenting support
Text 07507331456

National Domestic Abuse
0808 2000 247 24hrs a day helpline

Shefford and Stotfold Children's centre

0300 300 8112

School Lane
Shefford
SG17 5XA



Rook Tree Lane
Stotfold
SG5 4DL



Shefford and Stotfold
Children's centre

0-12's family service

V2 April 2021



Time for Two's

Join us for 4 weeks for play, fun & information around the development of your 2-year-old either virtually or in a small group
Stories, rhymes, mark making, messy play
Patterns of behaviour, Healthy Movers and free gifts
Wednesday 9th, 16th, 23rd, 30th June 10-11am Bookable

Young parents

A social session for parents under 22 years old with your baby or child
Every Wednesday 11 - 12 noon at Shefford Children's centre
Call or Text if you would like to join us 0758889226

Drop ins

Drop in for one-to-one support for your baby or child, including advice on sleep, behaviour, feeding & one to one breast feeding support.

Tuesday 9-12noon Arlesey youth centre, High St Arlesey SG15 6SN

Wednesday 9-11am Shefford Children's centre, Shefford SG17 5XA

Friday 9 - 12noon Stotfold Children's centre, Stotfold SG5 4DL

Introducing solids talk

Tuesday 25th May or Tuesday 29th June 10.30-11.30

at Arlesey youth centre, High St Arlesey SG15 6SN

Call 0300 300 8112 or Facebook message to book a place

Little Explorers - Buggy walk

Meet up with other local families, a nice place to socially distance, walk, explore, and play in open spaces, woodland, or the play park. Suitable for babies and toddlers.

Bellcote Meadow, Purcell Way, Shefford SG17 5RY

Every Wednesday 10.30-11.30am



Speech and language

Are you worried about your child's speech, listening, interaction or stammering? Book a phone consultation with our speech and language therapist on:

26th May or 28th June 9.30-11.30

Email sue.rogers1@nhs.net with your contact details.

SEND Book start corner

Book start is a lovely session covered over three weeks for families with children aged 1 to 3 years. Develop the love of stories and rhymes through socially distanced activities each week. This session is tailored to children with additional needs. Free book pack and resources.

Thurs 20th May & 3rd June at Stotfold Children's centre 10-11am

Call to book a place 0300 300 8112

Baby Days

Tuesday 8th, 15th, 22nd, 29th June 10.30-11.30am

At Shefford Children's centre. Call to book a place

A four-week postnatal course for parents with babies 0-3 months old. A friendly course, enabling you to meet other new parents find out about sleep, growth spurts, feeding, development, childhood illnesses.

Bump Birth and Baby stuff Antenatal course

A 4-week antenatal course for expectant parents 29 weeks or more. Topics on- what to expect as a new parent, birth, feeding, safe sleeping babies brain development and equipment you might need.

11th, 18th, 25th June and 2nd July 2-3pm

16th, 23rd, 30th July and 6th August 2-3pm

At Stotfold Children's centre Call to book or for more details

Activat
Go to Set

LITTLE EXPLORERS - Buggy Walk

Meet us at Bellcote Meadow Shefford, a nice place to socially distance, walk, explore, and play in open spaces, woodland, or the play park.

Suitable for babies and toddlers



Bellcote Meadow (Millennium Green)

Every Wednesday 10.30-11.30

Located at the bottom of Purcell Way,

Shefford SG17 5RY

Car park available



Please follow government guidelines for social distancing. Stay safe. Supervise your children at all times. Shefford and Stotfold Children's centre 0300 300 8112

Den building Scavenger Hunt Bug Hunts Leaf crowns

Friendly environment Meet new people Share experiences

Bookstart For children with additional needs or disabilities



We would like to invite you and your child to join us for three weeks of stories and rhymes
On Thursday 20th May, 27th May and 3rd June
10am - 11am at Stotfold Children's centre
Call or Facebook message to book a place



Bookstart starts children on their reading journey as early as possible

Free Bookstart pack

Children will just love to listen to your voice, have time together and explore new books



Shefford and Stotfold Children's centre, Rook Tree Lane, Stotfold SG5 4DL 0300 300 8112

Shefford Lower School

Diary Dates

(further dates will be added and these will be in bold italics)

Summer Term 2021	
31st May—4th June	Half Term
1st June	KS1 Holiday Club—booking forms on Parentmail
2nd June	KS2 Holiday Club—booking forms on Parentmail
7th June	Children return
9th June—14 July (Wednesdays)	Year 3 Swimming—Elm and Cedar
11th June—16th July (Fridays)	Year 3 Swimming—Hawthorn
21st - 25th June	Sports Week
21st June	Cherry Class Open Evening
24th June	Reception Hearing Screening
25th June	Virtual Parent Focus Group
28th June	Reception Classes Open Evening
2nd July	Transition (Move Up) Day
22nd July	Last day of Term

Governor's News

As we move into the final phases of this academic year the Governing Boards focus has been to support the school through these unprecedented times. This has been a big focus for us as governors, particularly on the recovery of the students learning journey. Shefford Lower School strives for excellence and are committed to a policy of inclusion, well-being, and education of all pupils. We believe in the potential of all children and take seriously our responsibility to enable them to achieve their very best. We will endeavour to make sure the school focus is on progress and recovery as we move into the next academic year.

We are working closely with the Local Authority and School to ensure that the two-tier transition is at the forefront of plans and ensure that this happens smoothly for every child. We will keep you updated on any further developments.

If you are interested in a position within our Governing Board, please email the school office. Further information regarding positions will be communicated within the Shefford community this term.

