



# Weekly Update

## Friday 27th May 2022



Please email [schooloffice@sheffield.cbeds.co.uk](mailto:schooloffice@sheffield.cbeds.co.uk) if you require support in accessing this newsletter in an alternative format.

Dear Families & Friends,

Thank you for support during assessment week. Our children learned to be Secret Agents in Training and the atmosphere in school was one of fun and feeling of success. Good routines at home, and sleep hygiene all help to support children when they have important day time activities, and we know that your partnership in this has supported us immensely.

Next in line for the government's statutory assessments are year 1. When we return after the extra day off on the 6th, they will begin their phonics check. A big thank you in advance for supporting your child to feel confident and happy with their phonics. We will of course support you further by sending some resources you can dip into too.

Reading is absolutely fundamental to success in learning, both at school and beyond. All elements of thinking are shown to improve when reading is fluent and children are successful self chosen readers. Our school curriculum has rich readers at the centre of every unit. You can see how this fits in on the [curriculum pages of our website](#) and we have also been using books about the queen as we learn about this week's jubilee celebrations. This newsletter has details of those books that you may like to use too!



When we come back, we have the huge picnic and our RED WHITE BLUE mufti day—we can't wait to see the children dressed up. We have even been practising special songs for the occasion and some queen related activities too! This week our children in the Eco council have made a jubilee coloured wheelbarrow for the Shuttleworth with bunting, portraits of the queen and lots of pictures of corgis. If you are attending Shuttleworth, please do look out for our wheelbarrow entry. Following on, we will have our Commonwealth day too, and learn lots about those countries.

Save the date for the 23rd June. After school, we open our Museum & Art Gallery alongside our Arts showcasing. All are welcome to see what is now on offer in Sheffield Lower for our pupils and also for the community. This has come about in conjunction with the Fitzwilliam in Cambridge and supports the [cultural capital](#) to equip children with lifelong learning knowledge. The skills linked to curatorship are all part of how we are devising our offer as we begin to think about taking in year 5 and year 6 and become Sheffield Primary School. We have already been drafting our curriculum areas in preparation, and have a secure progression mapped out for Forest School with an end of year 6 award.

This week, we say cheerio to Mrs Conacher. Mrs Conacher has worked at the school for 6 years and after her diligent time, this year in year four, she moves on to a new adventure. She has promised to visit and I'm sure you will join me in wishing her lots of luck. We also say a brief cheerio to Mrs Faulkener as she takes maternity leave—Good luck!

Next half term, we welcome Mrs Gudgion and Miss Bruce to the team as new staff. I'm sure you will join me in giving them a fabulous Sheffield Lower welcome to our school family.

Tidy Ted has been out and about lots. He has been with us all year helping the children learn the value of responsibility, with particular note of our cloakroom areas which can be a bit of a hazard with fallen coats and bags, not to mention the copious lost property if things comes loose. Please do help us. Children should not have rucksacks as there is no storage for these. They should have drawstring bags for PE which stay on their pegs and their books go in book bags which fit in their trays. Many thanks for your help with this. Our uniform policy is available [here](#)

In school we have been having a strong focus on behaviour as we move to the school field for play times. The PSA have supported us with more equipment and are now funding a set of traverse poles for the field area, as well as friendship benches. We are training new play leaders and supporting the children to know how to support each other with inclusion and friendly play. It is known that children learn this from each other, and the models they see around them. We have joined a 'behaviour hub' to help us continue to make improvements in what is already a very secure strength of our lovely school. Thank you for continuing to help us with this. It is a joy to be at Sheffield Lower, and a privilege for the staff to work with such a unified school family.

Have a wonderful weekend, a safe half term and we will see you on the 7th June. From Mrs Finch

## Values

The values of May will be Cooperation & Sharing

*"We are a team, one person struggles we all struggle. One person triumphs we all triumph."* Barcelona FC

Team work, playing a part whether large or small, encouraging each other to be included and feel valued. Sharing games, sharing equipment, sharing feelings, sharing friends. Understanding what might make others reluctant to share or cooperate and helping each other overcome these barriers.

### House Points

**Air –1304**

**Water—1195**

**Earth—1075**

**Fire—1073**

### House Points and Attendance

W/E 20/05/22

Well done to last week's house winners.



### House Attendance & Punctuality

Winner

**Air**

## Safeguarding Information

At Shefford Lower School we take our responsibilities to promote safeguarding the welfare of all children seriously. The designated persons for safeguarding children is the Headteacher who can be contacted via the school office on 01462 629123

Please find useful information updated weekly

### Mythbusters

**Myth:** "It's up to me if I smack my child to punish them."

**Buster:** This will always be investigated and recorded on \*CPOMS by schools, because the law forbids smacking except in exceptional circumstances. EG: If the violence you use is severe enough to leave a mark, a scratch or a bruise, you can be prosecuted for assault.

If you are concerned about a child outside of school you can phone 999 in an emergency or 101 to make a report. The NSPCC operated an urgent helpline on 0808800500

Shefford Museum and Gallery is growing fast at Shefford Lower School. It features copies of some the most famous paintings in the world and authentic historical and natural history artefacts. We would like to share a different exhibit each week in the news letter. This week's featured exhibit is

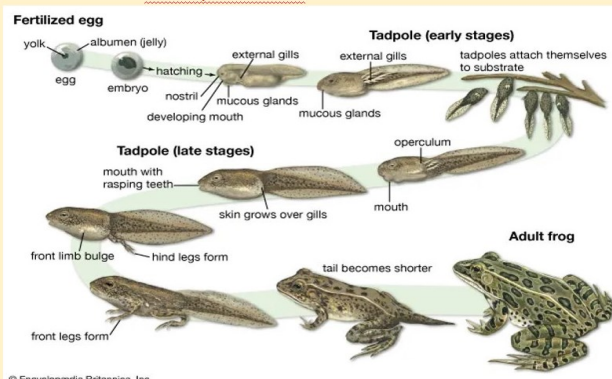
### Save the date

**23rd June 3.20pm**

**Museum's Art and Exhibition open evening**



## Frog Life Cycle Common frog *Rana Temporaria*





### **Red White & Blue themed Mufti Day—7th June**

On Tuesday 7th June we are celebrating the Queen's jubilee in school. We are going to have a school picnic on the field at 2pm that day and would appreciate some food donations for this celebration.

Please could your child bring a blanket to sit on for the picnic on the field.

This day will also be a red, white and blue themed mufti day, to add to our celebrations.

No face paint thank you.



### **Platinum Jubilee Celebration Lunch**

The kitchen are putting on a special Platinum Jubilee Lunch on 7th June, please see the change of menu for the first Tuesday back;

BBQ Chicken, Vegetarian Hot Dog or Cheesy Tomato Pasta

Jubilee Cake

## **Schools Wheelbarrow Garden Competition**

The theme for this year's competition is 'Jubilee', in line with celebrations that will be taking place around the UK to commemorate Queen Elizabeth II's 70-year reign. Schools have been invited to interpret the theme in their own individual and creative ways and if last year's competition is anything to go by, we look forward to seeing many different and beautifully thought-out designs!

To book your Daily Admission Ticket please visit:

[shuttleworth.org/book-your-tickets](https://shuttleworth.org/book-your-tickets)



This year we will be celebrating Her Majesty The Queen becoming the first British Monarch to celebrate a Platinum Jubilee after 70 years of service.  
Wow!

So, some of the children have been very crafty in the Hub and made some fantastic creations.



### Weekly Good News Calls

Here are the children whose parents and carers have received a phone call home this week to let them know how well their child has been working and showing their school values. Keep up the good work Shefford Lower.

<b><u>Reception</u></b>	Plum—Eddie & Kovah, Pear—Jude, Peach—Max
<b><u>Year 1</u></b>	Holly—Macie, Chestnut—Logan, Sycamore—Charlie
<b><u>Year 2</u></b>	Maple—Esmee, Oak—Adam, Willow—Lana
<b><u>Year 3</u></b>	Cedar—Kaitlyn, Elm—Isabella, Hawthorn—Louie
<b><u>Year 4</u></b>	Hazel—Kiera, Ash—Lexi, Beech—Max



Congratulations to the children below who have been recognised as a Finer Diner this week for displaying good manners and values at lunchtime

THANK YOU

<b><u>Reception</u></b>	Jamie, Henry, Lilly, Aiden, Imogen, Callum & Eddie
<b><u>Year 1</u></b>	Eva, Theo, Delilah, Evelyn, Heidi, Lizzie & Jackson
<b><u>Year 2</u></b>	Mathew, Daisy, Freddie, Bethany, Ollie, & Chloe
<b><u>Year 3</u></b>	Caitlyn, Tommy, Jacey-Mae, Denis, Emily, Izzy, Ted, & Remy
<b><u>Year 4</u></b>	Victoria, Louis, Leo, Poppy, Ella, Abhinaya, Demmy & Matthew



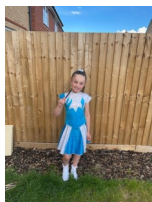
EXCUSE ME



### Shefford Sporting Successes

We celebrate children's sporting successes from home as well as those in school. Please send us photos of your child's certificates and/or medals which will be displayed on our PE celebration board and celebrated in assembly. Well done to these children who have shared their sporting success this week.

<b>Air House</b>	Lilly—Swimming, Jasmine—Swimming
<b>Earth House</b>	Scarlett—Dance, Rory—Rugby, Jesse—Football
<b>Fire House</b>	Kaitlyn—Swimming, Isla—Football
<b>Water House</b>	Lexi—Swimming, Ollie—Gymnastics, Eden—Football





## Community News

**Please note, the following events/activities are run independently of Shefford Lower.**



**JACK CAILLON**  
SOCCER SCHOOL  
FORMER WEST HAM AND WALES INTERNATIONAL FOOTBALLER

### MAY HALF TERM CAMP!

FOOTBALL, COMPETITIONS, FUN AND PRIZES FOR BOYS AND GIRLS AGED 5-15!  
\*3 DAYS ONLY\* MONDAY 30<sup>TH</sup> MAY – WEDNESDAY 1<sup>ST</sup> JUNE, 10:00-15:00  
ROBERT BLOOMFIELD ACADEMY, SG175BU  
1,2 AND 3 DAY TICKETS AVAILABLE  
\*\*\* ONLY 60 SPACES AVAILABLE \*\*\*  
**BOOK ONLINE NOW!**

As your child attends Shefford Lower School please use the code JCSSSCHOOL10 at the checkout to get 10% off the booking price, no clauses!



10% Discount for: NHS, Police, Fire Service, Military, Blue Light Card Holders and Siblings

**MBF**

### MAY/JUNE HOLIDAY FOOTBALL CAMPS

Date: 30th, 31st May and 1st June  
Venue: Pendleton Sports Centre, Stotfold  
Days: Monday, Tuesday & Wednesday  
Age: 4-16 Years  
Cost: £25-£60  
Extra 10% if booked before 17th May (can also be used with other codes)  
[www.midbedsfutsal.co.uk](http://www.midbedsfutsal.co.uk)

Delivered by UEFA B and Licensed Coaches  
Safe, Fun & Creative Environment.

Official Sponsor

**Evolution**  
Tree Works Services Ltd

Partners

SBS, Westyles, The Wellbeing Hub, Dan Gate Support Service

### HALF TERM SOCCER CAMP

**£20 PER DAY**  
9:30AM  
3:30PM

AGE: 5 TO 14 YEARS  
AGE: 4 YEARS HALF DAYS FROM 9:30AM 12:30PM  
£12  
DATE  
MAY 30TH LANGFORD FOOTBALL CLUB  
MAY 31ST RAYNSFORD SCHOOL  
JUNE 1ST RAYNSFORD SCHOOL  
VENUE: Raynsford Church of England Academy  
TO CONFORM YOUR PLACE PLEASE BOOK ONLINE AT  
[WWW.FOUNDATION-SPORTS.COM](http://WWW.FOUNDATION-SPORTS.COM)  
ADDRESS: Park Ln, Henlow SG16 6AT

ABOUT US  
ALL OUR COACHES ARE FA QUALIFIED, HOLD A FIRST AID, HAVE BEEN DBS CHECKED AND HAVE ATTENDED A CHILD PROTECTION WORK SHOP

@Foundation Sports Bedfordshire CONTACT: 07882046372

### JOIN IN THE FUN AT OUR May Camp

AGES 3 - 14

Tennis, Football, Cricket, Dance / Gymnastics, Go Karts, Nerf, Zorbing, & More

30th May - 3rd June  
(selected locations running on Bank Holidays)

Banbury: Cherry Fields Primary School  
Bedford: Great Ouse Primary Academy  
Brackley: The Radstone Primary School  
Fitzwilliam: Templefield Lower School  
London: Richmond  
MK: Kents Hill  
MK: Loughton Manor First School  
MK: Toddford Park Primary School  
MK: Wilton Primary School

**SPORTY SCHOLARS**

BOOK NOW: [www.sportyscholars.com](http://www.sportyscholars.com) . Tel: 07511 19 43 19

### Shefford Summer fete @ the STMA #Bigswell June 5th 2022

Craft and local product Stalls  
Food trucks  
family games and rides  
and much much more

### THE UK'S FAVOURITE BARRACUDAS Activity Day Camps

FUN AND ADVENTURE FOR 4½ - 14 YEAR OLDS  
QUOTE CODE: **SCHOOLS10**  
FOR AN EXTRA 10% OFF YOUR BOOKING

BOOK NOW!  
...for great rates!  
USE CODE **SCHOOLS10** FOR 10% OFF WHEN BOOKING A MINIMUM OF 2 DAYS!

Visit [barracudas.co.uk](http://barracudas.co.uk) or call 01480 467567

**Moving to become a primary as part of Central Bedfordshire's Schools For The Future project.**

<https://www.schoolsforthefuture.co.uk/>



To find Shefford Lower's Academic Calendar for 2021/2022 and 2022/2023 please refer to our website

### [Term Dates Link](#)

Please note this will be different to the Central Bedfordshire term dates



## Ivel Valley Parent Bulletin

## Ivel Valley Local Bulletin

# Children's Community Health HUB

Your one stop contact point

**0300 555 0606**  
ccs.bedsandlutonchildrenshealthhub@nhs.net

Open 9am-5pm every weekday (excluding BH)

New contact number and email address for the Beds and Luton 0-19 services, including:

- Health Visiting
- School Nursing

New contact number for:

- Luton Community Paediatric services (Edwin Lobo Centre)
- Beds and Luton Looked after Children's services

Health HUB - a single contact point, making it easier for you to get in touch with us.

Luton Children & Adults Community Health Services  
Bedfordshire Community Health Services

IT DOESN'T HURT TO ASK FOR HELP!

# Safe Space

**What is a Safe Space?**

- a place for you to go if you need to access support
- a place where you can contact a domestic abuse support service who will be able to help you safely

For more information, speak to a member of staff or contact [BDAP@centralbedfordshire.gov.uk](mailto:BDAP@centralbedfordshire.gov.uk)

[@bedsdv](https://www.bedsdv.org.uk)  
[bedsdv.org.uk](https://www.bedsdv.org.uk)



For further information please contact:

**FACES**  
The Centre  
147 Church Lane  
Bedford  
MK41 0PW  
T 01234 270601  
E [office@facesbedford.org](mailto:office@facesbedford.org)  
W [www.facesbedford.org](http://www.facesbedford.org)  
Registered charity number 1108574

Funded by:

Helping fathers value their children

# FACES

### What is caring dads?

Through 17 sessions fathers will...

- Develop skills to cope in healthy ways with frustrating situations.
- Understand how different fathering strategies and choices effect children.
- Increase their awareness of controlling abusive and neglectful attitudes and behaviours.
- Be provided with strategies to strengthen the father child relationship.

The Caring Dads group program runs one evening a week for 17 weeks. This group offers:

- A unique opportunity for men to connect as fathers.
- A combination of active group discussions and homework.

### Do you sometimes feel so angry at your child that you feel like blowing up?

**D**

### Are you concerned that your relationship with your child is not as close as you hoped it would be?

**A**

### Do you sometimes wonder how well you know your child?

**D**

### Sometimes you are concerned about the level of discipline that you seem to need to keep your child in line?

**S**

Eligibility is determined during a required screening interview.

There is no fee for this program.

### FACES

**Facts about fathering**

- Fathers can and want to be a positive influence in the lives of their children
- Positively involved fathers enhance their children's academic personal and social development

Unfortunately fathers can also have a negative impact on their children. This occurs when fathers:

- Do not understand the feelings and needs of their children
- Harshly discipline their children
- Argue frequently with their children's mothers
- Use abusive and controlling behaviour

GO TO 5

# Shefford Lower School

## Diary Dates

(further dates will be added and these will be in bold italics)

### 2022 Upcoming Dates

30th May—6th June	Half Term
30th May—31st May	Mr Tilbury's Holiday Club—Please complete Parentmail form to book a place
7th June	Children Return
7th June	Red, White and Blue themed Mufti Day - Jubilee celebrations
10th June	Commonwealth Countries Day - no need to dress up
14th June	Year 4 Faith Tour
20th June	Cherry Class Open Evening—Pre-booking required
20th—24th June	Road Safety Week
23rd June	Art Exhibition & Museum Open Evening
24th June	Year 1 Cake Sale—raising money for RSPCA
27th June	Reception Class Open Evening—Pre-booking required
30th June	Year 3 Sing Up Concert—Information sent out via Parentmail
1st July	Shuffle up day
5th July	Early Years Sports Afternoon—more information to follow
6th July	Year 1 and 2 Sports Afternoon—more information to follow
7th July	Year 3 and 4 Sports Afternoon—more information to follow
12th July	End of year music concert
13th July	Year 3 Cake Sale—raising money for Smiles
19th July	Year 4 leavers performance—Dress rehearsal
20th July	Year 4 leavers performance
22nd July	Last Day of Term
25th—29th July	Mr Tilbury's Holiday Club—Parentmail form will be available after May Half Term
5th September	2022/2023 School Year Begins

**Drop off times—08.45—09.00am**

**Collection times—3.20pm**

**The school office will be open from 8.30am to 3.45pm for any queries, please call 01462 629123 or email**

**[schooloffice@shefford.cbeds.co.uk](mailto:schooloffice@shefford.cbeds.co.uk)**