



## Weekly Update

Friday 14th May



Please email [schooloffice@shefford.cbeds.co.uk](mailto:schooloffice@shefford.cbeds.co.uk) if you require support in accessing this newsletter in an alternative format.

Dear Families and Friends,

It's an anticipatory weekend ahead, with many aspects about the forthcoming announcement being discussed. Schools in neighbouring counties (Bedford Borough) have been told already, not to ease their restrictions. Although very close to us, and Luton also being much higher, numbers remain low overall.

With that in mind, it is likely that we won't be asking you to wear masks in areas where you can socially distance. For example, when walking to school in the open air, able to manage the space in front of you. When at classroom doors though, please do put them on. We will still be handwashing, sanitising and distancing. We also remain in our year group bubbles, since this was a step up from our class bubbles. Dawn 2 Dusk also zone to keep children in year groups as do our clubs. The exception is the PE club in the holidays, who will remain in Key Stages, but ensure distancing.

We have also been discussing sports day. Whilst this is far off, it will be upon us quite quickly. This will also be in year groups rather than key stages. We are discussing whether one family member for each child will be permitted on site with mask, albeit in a more cordoned off space. The numbers that arrive in usual times would not be tenable, and we would be managing the mobility more carefully when on site. We will say more about this next week. There will be a fully themed sports week happening in school and lots of active challenges, which we know you like to get on board with.

I'd like to say a special thank you to the families who have read books for us—this is a brave thing to do, and I know they are incredibly well received. As you know, our brains privilege learning through stories, and we prioritise reading skills in primary education. Fostering a love of story has such huge benefits beyond the English curriculum, and certainly in areas of wellbeing and social interaction. After the year we have had, this can't be stressed enough.

Please do let the office know if you can be part of our parent focus group. With the change to become a primary school the views of parents and community mean a lot to us, and we aim to continue to provide an excellent education for the whole child at Shefford Lower.

We have new families arriving to us, and it is our aim to provide an open evening for those who have not yet been in our school. We realise this is important, and Mrs Freeman and I have plans underway for children in Cherry and Reception in September. Please keep an eye on diary dates in this newsletter.

Year 4 have been able to attend a leavers trip this week, and whilst the weather was a bit shaky, the enjoyment factor is firmly in place. Thank you to Mrs Hall for pulling this together in such limited timing, and to our PSA for recognising the importance of this activity. Trips and a variety of school activities were missed over the past 18 months. We cannot backfill all of these activities, but aim to have clubs and trips firmly back in place going forwards. We also like to ensure that children have experiences within school too, which include experience days, use of the immersive room, forest school and plenty of outside learning. Swimming is on this year, which was missed last year, and this will be backfilled to ensure that pupils have the opportunity to learn to swim. The national requirement is 'before year 6' and we work with our feeder schools to ensure we transition children for their next phase of learning highly prepared.

Our next attention moves to the school reports you will receive. We have worked with you directly over the lockdowns, and have benefited hugely from your communications to us. This is something I am proud of at Shefford Lower School. We have had your children for Autumn term and some of Summer, as well as taught them remotely with your amazing support. It has truly been a shared effort with all of you. We always say that no query, question or suggestion is too small, and our teachers are always approachable.

Regards

Mrs Pamela Finch

## Values

The values from May 4th —May 28th are **Thoughtfulness & Patience**

*"Be a rainbow in somebody else's cloud" Maya Angelou.*

*Thinking of others and putting their thoughts before our own. Thinking of the needs of others & giving time and space to support them. Enduring hardships and difficulties to achieve your goals.*

### House Points and Attendance W/E 07.05.21

Well done to last week's house winners.



#### House Points

Fire—953  
Water—896  
Earth—890  
Air—735

#### House Attendance & Punctuality

Water—97.41  
Fire—96.76  
Earth—96.34  
Air 90.79



We would like to share with you this amazing piece of art drawn by Emily in Chestnut class.

As part of an art lesson Chestnut class were sketching the other half of a famous painting by Vincent Van Gogh.

This famous piece is now on display in Mrs Finch office for all to see.

The whole school had their class photos taken on the 28th April and the proofs for these should now be in your child's book bag. If you would like to order this please go to [www.dsp-order.uk](http://www.dsp-order.uk) and us the Proof ID number on your class card.

The deadline for ordering these for free delivery to school is the **Wednesday 19th May**. Orders after this will incur a delivery charge.

If you need another copy of the proof card please call the School Office on 01462 629123



### Amazon Wish List



Just a reminder about our Wish List on Amazon! It contains carefully selected books and resources which we know will greatly benefit your children with their learning this year. If you wish to purchase a book for our school, please use the link below to find the full list:

[https://www.amazon.co.uk/hz/wishlist/ls/2ZZUJD59NIDQ7/ref=nav\\_wishlist\\_lists\\_1?encoding=UTF8&type=wishlist#](https://www.amazon.co.uk/hz/wishlist/ls/2ZZUJD59NIDQ7/ref=nav_wishlist_lists_1?encoding=UTF8&type=wishlist#)

This list is updated by staff throughout the year and can be accessed by anyone. We've made it really easy to donate a book to the school:

You can choose to get the books delivered directly to the school office or if you wish you can add it to your personal shopping and simply bring it in.

Thank you so much for your help with this matter. Your donations will be gratefully received and the children will benefit massively.



### Shefford Sporting Successes W/C 10th May

We celebrate children's sporting successes from home as well as those in school. As clubs begin to start up again, please send us photos of your child's certificates and/or medals which will be displayed on our PE celebration board and celebrated in assembly.



***Well done to these children who have shared their sporting success with us this week***

#### Water House

Immy—Swimming

#### Fire House

Thea C—PB 2KM run

#### Air House

Daniel—Football  
Kayleigh—Swimming  
Abbie—Football  
Arianna—Dance  
Elliot—Football



**This week the children have been having a go at a catch and clap challenge. These are the children who made the most improvement over the week**

Chestnut—Aaron and Eden, Holly—Oscar and Bethany,  
Sycamore—Charlie and Daisy, Maple—George and Laila  
Oak—George and Louie, Willow—Kayleigh and Mason,  
Cedar—Demmy and Deniz, Hawthorn—Emilie and Abhinaya and  
Elm—Freddie and Georgie

## Phone Calls Home

Teachers will be making phone calls home every week to let parents and carers know how well their child has been working and for showing school values! Keep up the good work Shefford Lower!

W/C 03/05/21



### Reception

**Peach** — Connie M

**Pear** — Heidi D-M

**Plum** — Lizzie D

### Year 1

**Chestnut** — Lana

**Holly** — Grace Mc

**Sycamore** — Elisa C



### Year 2

**Maple** — Remy S

**Oak** — Isla S

**Willow** — Amber B



### Year 3

**Cedar** — Connie B

**Elm** — Ekam P

**Hawthorn** — Emelia N



### Year 4

**Ash** — Isla H

**Beech** — Daniel M

**Hazel** — Mason C



## Finer Diners

Congratulations to the children below who have been recognised as a Finer Diner last week for displaying good manners and values at lunchtime:



### Reception

Victoria B, Toby A, Theodore J,  
Louis G, Anella C, Ellie L, Jayda B,  
Vincenzo F, Macie H and Sam G

EXCUSE ME

### Year 1

Mathew C, Daisy L, Jacob H, Thea  
C, Cayden H, Sienna A, Vinnie G,  
Joshua A, Grace Mc, Bethany L,  
Felicity E, Aaron T and William R

THANK YOU

### Year 2

Kaitlyn C, Mia W, Lewie H, Scarlet  
N, Ella R, Kaiden B, Isla K, Bethan L,  
Eddie C, Rachel P

### Year 4

Bailey S, Abbie H, Joshua A,  
Myka R, Sophie R and Daniel M

### Year 3

Amber J, Evie E, Jackson W,  
Jamie E, Ekam P, Harry K  
and Maisie F-S

## PSA News

Our next meeting is on **Thursday 17<sup>th</sup> June @ 7.30pm** via Zoom

### Would you like to join the PSA?

One of the main benefits that people gain from being involved in the PSA is the feeling of contribution to their child's school life and also the social aspect of meeting other parents.

During our meetings we discuss ideas for future fundraising and community events for the benefit of the children at Shefford Lower School.

Does this sound like something you want to be a part of?

Please contact us through the school office or via our Facebook page to find out more about the PSA.

### How to support the PSA

Help us raise **FREE** funds for

**Shefford Lower School PSA**

every time you **shop online**

Just search for us on [easyfundraising.org.uk](https://easyfundraising.org.uk)

**DINO BANK**





You'll find him in the school entrance.

He's always hungry and is kept happy by feeding him your spare change!

*Thank you*



### How the lottery works

	<p><b>£1 per ticket</b></p> <p>That's right, unlike many other lotteries, our lottery tickets are only £1 per week.</p> 	<p><b>Help us do more</b></p> <p>For every ticket you play, 76% goes to our school and prizes.</p> 	<p><b>£25,000 grand prize</b></p> <p>Match all 6 numbers and you win the JACKPOT!</p> 
---	---	--	---

A big thank you to everyone for your continued support of our PSA





# Sheffield Lower School

## Half Term Holiday Club

*For children who attend Sheffield Lower in Years 1- 4*



**KS1 - Tuesday 1st June 9.00am—3.30pm**

**KS2—Wednesday 2nd June 9.00am—3.30pm**

*Numbers are limited to 20 children per day and places will be allocated on a first come, first served basis.*

**£18.00 per day**

**£12.00 per sibling**

## **BOOK NOW !**

Booking forms are available on ParentMail. Please contact the [schooloffice@sheffield.cbeds.co.uk](mailto:schooloffice@sheffield.cbeds.co.uk) if you require a paper copy.



# Have your say...

## on proposed changes to schools in your area



**Around 43,000 new homes are expected to be built in Central Bedfordshire by 2035 – and that means more SEND school places will be needed.**

Local schools have been working together, with Central Bedfordshire Council, on a long-term plan to make sure we have:

- The right schools
- In the right places
- Delivering the best education

The proposed plan includes an increase of places at 4 Special Schools, an increase of Additional Resource Provision places within mainstream schools and including multi-use and nurture spaces in mainstream schools, where there is space to do so.

**Find out more and have your say at**  
**[www.schoolsforthefuture.co.uk/SEND](http://www.schoolsforthefuture.co.uk/SEND)**

The consultation is open until  
8 July 2021.

**Additional Resource Provision  
in mainstream schools**

**Schools for the Future**

...the right schools, in the right places, delivering the best education



## Community News

**Please note, the following events/activities are run independently of Shefford Lower.**



### HALF TERM FOOTBALL CAMP

Creativity, Confidence, Control, & Courage

**JUNE 1st, 2nd, & 3rd**

Including indoor & outdoor activities

We're now offering a payment plan to help you spread the cost.

Get in touch to find out more!

Join us for our half-term camp!

1 day: £20  
2 day: £40  
3 day: £50

- Held at **Pendleton Centre, Stotfold.**

- Camp drop off **10am**, pick up **3pm**.

- Available for players between the **ages of 5-15.**

- Delivered by UEFA B & FA licensed coaches.

**Limited spaces available!**

**Book Today:**

Head to our **website:**  
[www.midbedsfutsal.co.uk](http://www.midbedsfutsal.co.uk)

Send us an **email:**  
[midbedsfutsal@gmail.co.uk](mailto:midbedsfutsal@gmail.co.uk)



Pick n' Mix  
EVENTS

Supported by Flitwick Town Council



**Flitwick Foodie Fest**



f /PicknMixEventsUK

**LAST SUNDAY OF THE MONTH**

**12pm-6pm**

**COME HUNGRY!**

### Our Holiday Camps near you...

**Venue:** Henlow Academy

**Dates:** Tues 1st - Fri 4th June 2021

**Times:** 08.00 - 16.00

**Price:** £80 - 4 day block booking (£20 per day)

**Ages:** Juniors (5-8 years) & Seniors (9-12 years)

**Additional Info:**

We will be continuing to work with a 'bubble' system to keep your child & our staff safe, following current guidance.



### Taking every precaution

Our Activity Professionals have been undergoing additional training in order to provide the best care to the children under their supervision, specifically the Transcend Level 2 Award in Infection Prevention, Mitigation and Management.

### They will need

- A packed lunch
- Plenty of water
- Suitable clothing for the weather
- Loads of energy!

**Premier Education Promise:** In the event these courses are cancelled, we will issue a full refund within 7 days.

Trustpilot 4.8/5  
★★★★★  
Based on over 5,000 reviews

To book now, visit  
[premier-education.com/holiday-camps](http://premier-education.com/holiday-camps)  
Follow our socials @PremEducationUK

**Premier Education**



**13+ years £2  
2-12 years £8  
Under 2's FREE**

**FUNTOPIA AT FLITWICK**

**THE INFLATABLE FAMILY FUN DAY**

**PAY TO PLAY ALL DAY!**

**COVID-19 SAFETY MEASURES IN PLACE**

Pick n' Mix  
EVENTS

f @funtopiauk

**Millennium Park 'The Rec'**



## NATIONAL SMILE MONTH

17 MAY - 17 JUNE 2021

A smile is a great asset and has so many life-changing benefits. That's why it makes sense to give it the best care possible.

**#smilemonth**



# Family support Drop in

We provide a friendly service to families with children 0-12 years

No need to book a place, turn up on the day or call us for more information

Behaviour support

Child Development

Feeding support

Info on activities

Confidential support

Vitamins & Doidy cups

Speech and language

Fresh food products

Benefit and debt advice

**Tuesday 9 - 12 @ Arlesey Youth Centre** High St SG15 6SN

**Wednesday 9 - 11 @ Shefford Children's centre** School Lane SG17 5XA

**Friday 9 - 12 @ Stotfold Children's centre** Rook Tree Lane, SG5 4DL



Shefford and Stotfold Children's Centre S  
0300 300 8112



## Children Centres

Children centres provide high quality services to children, 0-12 years, and their families, in order to give every child, the best start in life.

- We offer:
- One to one family support
  - Relationship and conflict support
  - Advice on parenting and child development
  - Free safety in the home checks
  - Information and advice on childcare and funded places
  - Support from a speech and language therapist
  - Support for children with additional needs
  - Early education and school readiness
  - Vitamins and doidy cups available

## Useful contacts

National Breastfeeding helpline number  
0300 100 0212 Open 09.30 - 21.30

SPA Health Visiting and school nurse team  
0300 555 0606 Monday - Friday 8am to 5.30pm

Parent line Text messaging service for parenting support  
Text 07507331456

National Domestic Abuse  
0808 2000 247 24hrs a day helpline

## Shefford and Stotfold Children's centre

0300 300 8112

School Lane  
Shefford  
SG17 5XA



Rook Tree Lane  
Stotfold  
SG5 4DL



Shefford and Stotfold  
Children's centre

0-12's family service

## Time for Two's

Join us for 4 weeks for play, fun & information around the development of your 2-year-old either virtually or in a small group  
Stories, rhymes, mark making, messy play  
Patterns of behaviour, Healthy Movers and free gifts  
Wednesday 9th, 16th, 23rd, 30th June 10-11am Bookable

## Young parents

A social session for parents under 22 years old with your baby or child  
Every Wednesday 11 - 12 noon at Shefford Children's centre  
Call or Text if you would like to join us 0758889226

## Drop ins

Drop in for one-to-one support for your baby or child, including advice on sleep, behaviour, feeding & one to one breast feeding support.

Tuesday 9-12noon Arlesey youth centre, High St Arlesey SG15 6SN

Wednesday 9-11am Shefford Children's centre, Shefford SG17 5XA

Friday 9 - 12noon Stotfold Children's centre, Stotfold SG5 4DL

## Introducing solids talk

Tuesday 25th May or Tuesday 29th June 10.30-11.30  
at Arlesey youth centre, High St Arlesey SG15 6SN

Call 0300 300 8112 or Facebook message to book a place

## Little Explorers - Buggy walk

Meet up with other local families, a nice place to socially distance, walk, explore, and play in open spaces, woodland, or the play park. Suitable for babies and toddlers.

Bellcote Meadow, Purcell Way, Shefford SG17 5RY

Every Wednesday 10.30-11.30am

## Speech and language

Are you worried about your child's speech, listening, interaction or stammering? Book a phone consultation with our speech and language therapist on:

26th May or 28th June 9.30-11.30

Email sue.rogers1@nhs.net with your contact details.

## SEND Book start corner

Book start is a lovely session covered over three weeks for families with children aged 1 to 3 years. Develop the love of stories and rhymes through socially distanced activities each week. This session is tailored to children with additional needs. Free book pack and resources.

Thurs 20th 27th May & 3rd June at Stotfold Children's centre 10-11am  
Call to book a place 0300 300 8112

## Baby Days

Tuesday 8th, 15th, 22nd, 29th June 10.30-11.30am

At Shefford Children's centre. Call to book a place

A four-week postnatal course for parents with babies 0-3 months old. A friendly course, enabling you to meet other new parents find out about sleep, growth spurts, feeding, development, childhood illnesses.

## Bump Birth and Baby stuff Antenatal course

A 4-week antenatal course for expectant parents 29 weeks or more. Topics on- what to expect as a new parent, birth, feeding, safe sleeping babies brain development and equipment you might need.

11th, 18th, 25th June and 2nd July 2-3pm

16th, 23rd, 30th July and 6th August 2-3pm

At Stotfold Children's centre Call to book or for more details



Activat  
Go to Set

## Bookstart For children with additional needs or disabilities

We would like to invite you and your child to join us for three weeks of stories and rhymes

On Thursday 20th May, 27th May and 3rd June

10am - 11am at Stotfold Children's centre

Call or Facebook message to book a place



Bookstart starts children on their reading journey as early as possible

Free Bookstart pack

Children will just love to listen to your voice, have time together and explore new books



Shefford and Stotfold Children's centre, Rook Tree Lane, Stotfold SG5 4DL. 0300 300 8112

## LITTLE EXPLORERS - Buggy Walk

Meet us at Bellcote Meadow Shefford, a nice place to socially distance, walk, explore, and play in open spaces, woodland, or the play park.

Suitable for babies and toddlers



## Bellcote Meadow (Millennium Green)

Every Wednesday 10.30-11.30

Located at the bottom of Purcell Way,

Shefford SG17 5RY

Car park available



Den building Scavenger Hunt Leaf crowns Bug Hunts

Friendly environment Meet new people Share experiences

Please follow Government guidelines for social distancing. Stay safe. Supervise your children at all times. Shefford and Stotfold Children's centre 0300 300 8112

## Children's Centre News

Please find information of a up to time-  
table for drop in sessions for families  
with children aged 0—12 years





## **VACANCY – June 2021**

### **CLEANER**

**8.75 hours per week**

**From 3.30pm until 5.15pm daily at an hourly rate of £9.00**

**Term time only plus extra hours during the first 2 weeks of the summer holiday – total of 22.25 hours**

Shefford Lower School is a thriving, friendly, values based school with over 500 children on roll. Our school offers a very well-resourced and vibrant learning environment for both children and staff to develop and achieve their potential.

We are looking for a cleaner to join our team. Experience is desirable, although training will be given to clean classrooms, toilets, corridors, cloakrooms and outside. What is required is a willingness to work hard with a keen eye for detail.

Visit our website for an application form and further details:  
[www.sheffordlowerschool.co.uk](http://www.sheffordlowerschool.co.uk)

Completed application forms to be sent to: The School Office, Shefford Lower School, School Lane, Shefford SG17 5XA or [schooloffice@shefford.cbeds.co.uk](mailto:schooloffice@shefford.cbeds.co.uk)

**Closing Date: Wednesday 19<sup>th</sup> May at 3.30pm**

**Interviews: Monday 24<sup>th</sup> May 2021**

*All staff are required to follow our policies and procedures working in line with the ethical framework and values of the school.*

*Shefford Lower School is committed to safeguarding children and all appointments are subject to enhanced Disclosure & Barring Service check.*

# Shefford Lower School

## Diary Dates

(further dates will be added and these will be in bold italics)

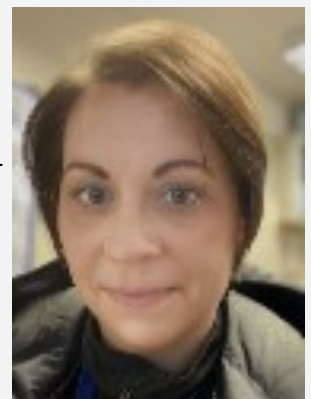
Summer Term 2021	
<u>19th May</u>	<u>Last orders for Class photos</u>
17th—21st May	Walk to School Week
31st May—4th June	Half Term
<u>1st June</u>	<u>KS1 Holiday Club—booking forms on Parentmail</u>
<u>2nd June</u>	<u>KS2 Holiday Club—booking forms on Parentmail</u>
7th June	Children return
<u>21st - 25th June</u>	<u>Sports Week</u>
<u>21st June</u>	<u>Cherry Class Open Evening</u>
<u>24th June</u>	<u>Reception Hearing Screening</u>
<u>28th June</u>	<u>Reception Classes Open Evening</u>
2nd July	Transition (Move Up) Day
22nd July	Last day of Term

### Governor's News

As we move into the final phases of this academic year the Governing Boards focus has been to support the school through these unprecedented times. This has been a big focus for us as governors, particularly on the recovery of the students learning journey. Shefford Lower School strives for excellence and are committed to a policy of inclusion, well-being, and education of all pupils. We believe in the potential of all children and take seriously our responsibility to enable them to achieve their very best. We will endeavour to make sure the school focus is on progress and recovery as we move into the next academic year.

We are working closely with the Local Authority and School to ensure that the two-year transition is at the forefront of plans and ensure that this happens smoothly for every child. We will keep you updated on any further developments.

If you are interested in a position within our Governing Board, please email the school office. Further information regarding positions will be communicated within the Shefford community this term.



ti-