



Weekly Update

Friday 11th March 2022



Please email schooloffice@sheffield.cbeds.co.uk if you require support in accessing this newsletter in an alternative format.

Dear Families and Friends,

This week we have been thrilled to see our World Book Day displays go up. The children really engaged with the day and the activities on offer. They had the opportunity this week to choose books and explore the book fair, which has been a huge success. Sheffield Lower School prides itself on a curriculum that centres



around reading, and is connected across subjects. We designed our curriculum with the renowned Mary Myatt and our children experience rich reading experiences throughout. The opportunities within World Book Day help to celebrate all that our children have achieved, despite the lockdowns, remote learning and gaps caused by the pandemic. Please do continue to read with your children daily, as we all know that little and often serves best.



Our boys' reading club has really taken off on a Friday afternoon. Miss Sharma is seeking male volunteers to support this further, now that restrictions allow. If you can spare the odd Friday, or day I say every Friday, please do get in touch with Miss Sharma and let her know your availability.

This week, children have had experiences with our hands on WoW days. This was funded by the PSA who work to ensure the enjoyment and extras within school that make their learning journey so memorable. The PSA always need new faces and are always so very welcoming. The WoW days have involved hands on experiences with Safari Stu for our younger age groups. For our older children, close encounters in the hall with birds of prey has been exceptional. The children will undoubtedly be invigorated by these experiences and teachers will maximise this in the learning and writing that comes afterwards. By having visual and hands on activities children's writing revitalises, so it's business and pleasure!

With the increases in support needed in schools nationwide, Sheffield Lower continues to advertise for support staff and site staff. If you could be part of our friendly team of TAs please see our [advert](#). Likewise, Mr Thorogood is seeking someone to be part of his site team with him, looking after our school and keeping us in ship shape.



On a lighter note, we are very much looking forward to Rosco's birthday. He will be 2 years old. It's been super having Rosco on our team. Rosco is not a PAT dog, he is our much adored mascot, and the children love to work with him. He has a comprehensive risk assessment and protocols in school, particularly around allergies and areas of the school where lively activities and groups of children are.

The year 4 residential is underway, and it was lovely to be able to talk face to face in our hall with parents and answer your queries. We are gradually returning to a 'normal' of sorts, and this has included more trips and events in school. We look forward to more times ahead.

Have a wonderful weekend.

From Mrs Finch



Values

The values of March will be Courage & Determination

"What would life be if we had no courage to attempt anything?" Vincent Van Gogh.

Courage when you least feel like trying. Not giving up.. Knowing it is worth it, if not immediately, then in the long run. Courage when you are a lone voice in a crowd, when peer pressure is high.

House Points and Attendance

W/E 04/03/22

House Points

Air—879
Fire—844
Water—697
Earth—602

House Attendance & Punctuality Winner

Earth



Lunchbox tips

Salt facts and recommended daily amounts

Too much salt can put us and our kids at risk of high blood pressure and heart disease later on in life.

The maximum recommended daily amounts of salt are:



4 to 6 years old: 3 grams (6 sachets)



7 to 10 years old: 5 grams (10 sachets)



11 and older: 6 grams (12 sachets)

Safeguarding Information

At Shefford Lower School we take our responsibilities to promote safeguarding the welfare of all children seriously. The designated persons for safeguarding children is the Headteacher who can be contacted via the school office on 01462 629123
Please find useful information updated weekly

Mythbusters

Myth: "It's up to me if I smack my child to punish them."

Buster: This will always be investigated and recorded on *CPOMS by schools, because the law forbids smacking except in exceptional circumstances. EG: If the violence you use is severe enough to leave a mark, a scratch or a bruise, you can be prosecuted for assault. .

If you are concerned about a child outside of school you can phone 999 in an emergency or 101 to make a report.

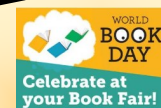
The NSPCC operated an urgent helpline on 0808800500



Thank you for your kind donations so far. We have added some more items to our Amazon wish list that will greatly benefit your children with their learning this year. If you would like to purchase a book for our school please click [here](#)

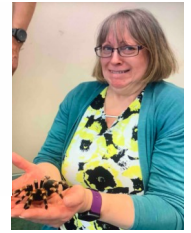


Check out this amazing piece of homework from Isla in Ash, by scanning the QR code below. Isla's task was to learn how to change a bed for the upcoming Year 4 residential trip to Kingswood. Isla has combined her bed-making skills with a animation video showing us her computer skills to. Well done Isla this is an amazing Learning Log. Keep up the fantastic work



Thank you for all your support with the Book Fair this week. We managed to raise £400 towards some new books for our amazing library

WOW Event at Shefford Lower School. Supported by the PSA



This week the children took part in a memorable and exciting experience in school which sparked their imagination to produce an unaided piece of writing to support the English curriculum. Safari Stu came with his creatures and Herrings Green Activity Farm brought a variety of Birds of Prey. This was very gratefully funded by our amazing PSA. We look forward to seeing the aspiring writing that is produced from this event.



The birds swooped over our heads and the owls were silent.

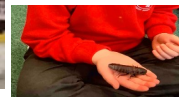
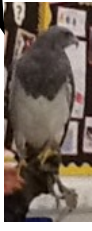
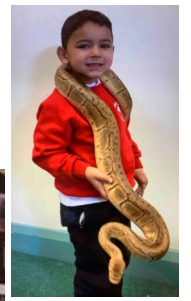
The tarantula was tickly and very light in my hand

The snake felt smooth and soft

The Owl's are flexible and we saw them turn their heads all the way round

The Chilean Eagle was humongous.

I was nervous at first but now I'm not



Shefford Museum and Gallery is growing fast at Shefford Lower School. It features copies of some the most famous paintings in the world and authentic historical and natural history artefacts. We would like to share a different exhibit each week in the news letter. This week's featured exhibit is

This is an Egyptian Bes Amulet

A polychrome faience amulet of the dwarf god, Bes, in a turquoise blue satin glaze with raised accents in a yellow glaze. The god is depicted frontal-facing and in his typical position with his on his hips. The plumed headdress is distinguishable on the god's head. The amulet is modelled similarly on both sides and is pieced longitudinally for suspension.

About the Dwarf God: Bes (Bisu, Aha) was an ancient Egyptian dwarf god. He was a complex being who was both a deity and a demonic fighter. He was a god of war, yet he was also a patron of childbirth and the home

Date: Circa 1st Century BC – 1st Century AD



Weekly Good News Calls

Here are the children whose parents and carers have received a phone call home this week to let them know how well their child has been working and showing their school values. Keep up the good work Shefford Lower.

<u>Reception</u>	Plum—Eddie, Peach—Darcey, Pear—Oliver
<u>Year 1</u>	Sycamore—Jessica, Holly—David, Chestnut—Hattie
<u>Year 2</u>	Willow—Aaron, Oak—Eva, Maple—Charlie
<u>Year 3</u>	Cedar—Jake, Elm—Ollie, Hawthorn—Max
<u>Year 4</u>	Beech—Heidi, Ash—Charlie, Hazel—Charlie



Shefford Sporting Successes

We celebrate children's sporting successes from home as well as those in school. Please send us photos of your child's certificates and/or medals which will be displayed on our PE celebration board and celebrated in assembly. Well done to these children who have shared their sporting success this week.

Fire House

Thea—Swimming

Water House

Ollie—Rugby

Air House

Mabel—Swimming



Congratulations to the children below who have been recognised as a Finer Diner this week for displaying good manners and values at lunchtime

EXCUSE ME

THANK YOU

<u>Reception</u>	Barnaby, Ronnie, Lily, Ollie, Ben, Beatrix, Theo, Alice
<u>Year 1</u>	Miles, Eleanor, Leon, Ellie, Blake, Jasmine, Anurada
<u>Year 2</u>	Aleen, Sienna, Jay-Ross, Poppy, Scarlet, Gabriel
<u>Year 3</u>	Lola, Mark, Edie, Theo, Marley, Sidney
<u>Year 4</u>	Livvie, Harry, Iris, Freddie, Kiera, Blake



WANTED - NEW GOVERNORS

What are we looking for?

Our school Governing Body is made up of Governors from all walks of life and many come to us through a variety of routes and with a range of different backgrounds, skills, and experiences, but they are all volunteers who work together for the benefit of the school and are the link between the school and the community it serves.

We want you –

We are currently looking for new Governors and would be delighted to hear from anyone who has:

1. An interest in the performance of the school.
 2. A desire to contribute to and represent the community.
 3. An open and enquiring mind
 4. The ability to look at issues objectively
 5. The confidence to ask questions and join in debate.
 6. A willingness to listen and make informed judgements
 7. The ability to work well with others
- Time to spare



Everyone has something to offer, and we want people from as many backgrounds and with as wide a range of interests as possible.

What can we offer?

- A chance to develop skills in strategic management
- The opportunity to work with our team of governors and staff in improving our School
- A sense of achievement in making a difference to our School
- The pleasure of helping students reach their potential

What is the Governing Body's Role?

The Governing Body of our school plays a key role in: • setting targets for raising standards of educational achievement.

1. Monitoring progress towards meeting these targets.
2. Supporting and challenging the performance of the headteacher
3. Deciding policy and future development plans

As well as attending meetings governors are also asked to look at specific areas of the school's work in more detail. To help support governors, everyone has access to further training to help build on existing skills or to develop new ones.

Please look out on the school Parent Mail for further information or hand you details to the school office. The chair of Governors, Jo Elliott will then be in contact.

schooloffice@shefford.cbeds.co.uk

PSA News

Our next meeting is our AGM on **Thursday 24th March @ 7.30pm** and we need YOU!

This is a great opportunity to join the PSA as a new committee take the lead on discussing, planning and running lots of exciting events for all of the students at Shefford Lower School.

If you are keen to get involved then please contact the office.

All roles within the elected committee need filling as the current team step down after 2 years. No previous experience is necessary – the current Chair, Secretary and Treasurer all took on the roles in their first meeting at the AGM in 2020 and are willing to guide and assist anyone wishing to put themselves forward for these roles.

Please take a look at the descriptions below of what is entailed in each position and get in touch with the office to find out more about them.

PSA Chairperson (The Chair)

The Chair is the public face of the elected committee, representing the PSA where necessary at public events and meetings within the school. They are usually the 'nominated person' for the committee at the AGM and also the main liaison with the Head Teacher and staff at the school

- Responsible for making interim decisions if necessary, that do not need the full committee. (All major decisions need to go to the full committee)
- To understand the roles and legal obligations of the committee ensuring confidentiality requirements of the school and discussions within the PSA meetings are met
- Responsible for ensuring all PSA members adhere to the school safe guarding policies
- Takes charge of open meetings (AGM etc) and committee meetings. Ensuring meetings are effective, kept to time and the agenda fully covered. The chair has the casting vote of any decisions that need to be made at meetings
- Must support and authorise the work of the secretary and treasurer
- Receive a copy of all bank statements
- Authorised to create sub committees for events and smaller expenditure when/if necessary.

PSA Vice-Chair

- The Vice Chair provides support to the chair and shares the workload if necessary
- The Vice Chair should conduct meetings in the absence of The Chair
- The Vice Chair may be called upon to assist The Chair with immediate decision making where a full PSA meeting may be inappropriate or too far away

PSA Treasurer

- Maintain an overview of the PSA bank accounts
- Report status of accounts at the meetings
- Keep notes of incoming and outgoing expenditure
- Arrange floats for events - drop off at school if necessary
- The ability to bank large amounts of money regularly
- The ability to respond to emails regularly
- To work with The Chair and school to make sure invoices are paid
- Oversee administration of the Your School Lottery account

PSA Secretary

- Discuss items for the next meeting with 'The Chair', ideally a week or two before the meeting.
- Write the agenda and email the committee and school representatives separately (via Paula Hudson).
- Attend every meeting and take the minutes
- Write up the minutes and circulate round the committee and school representatives separately within a suitable time frame (1 week of meeting)
- Keep a list of all member's details for correspondence
- Contact any parents who have shown an interest in joining the committee i.e. after a coffee morning or new parent evenings.
- Save the agendas and minutes onto the PSA page of the school intranet (See Paula H in the office)
- Keep PSA Noticeboard up to date
- Keep school community updated through newsletter and social media.



Sheffield Lower School

Easter Holiday Club

For children who attend Sheffield Lower in Years 1- 4



Monday 4th April 9.00am - 3.30pm - 9 space left

Tuesday 5th April 9.00am - 3.30pm - 8 spaces left

Wednesday 6th April 9.00am - 3.30pm - 12 spaces left

Numbers are limited to 30 children per day on a first come first served basis.

£18.00 per day

£12.00 per sibling

BOOK NOW !

Booking forms are available on Parent Mail or paper copies can be collected from the School Office.

Community News

Please note, the following events/activities are run independently of Shefford Lower.

at Stondon Village Hall
Offer a free trial (Excluding Clubbierie)
IDTA ACCREDITED

Join us for our
Fun Football Camp
April 30th - 7th & 12th-14th 2022
Pendleton Sports Centre- Stotford

Held at Pendleton Sports Centre, Stotford
Camp drop off 10am, pick up 3pm
Available to players between the ages of 4-15 years
Delivered by UEFA B and FA Licensed Coaches

Book Today
Head over to: www.midsbafutsal.co.uk
Send us an email: midsbafutsal@gmail.com

Adult Clubbierie classes running at Ardsley Village Hall
FUN DAYS during half terms and school holidays

WEDNESDAY	THURSDAY	FRIDAY	SATURDAY
9:00-10:00am 10:00-11:00am	9:00-10:00am 10:00-11:00am	9:00-10:00am 10:00-11:00am	9:00-10:00am 10:00-11:00am

For more information visit: www.midsbafutsal.co.uk

[Click for more information](#)

EASTER FOOTBALL CAMP

Join us for our
Fun Football Camp
April 30th - 7th & 12th-14th 2022
Pendleton Sports Centre- Stotford

Held at Pendleton Sports Centre, Stotford
Camp drop off 10am, pick up 3pm
Available to players between the ages of 4-15 years
Delivered by UEFA B and FA Licensed Coaches

Book Today
Head over to: www.midsbafutsal.co.uk
Send us an email: midsbafutsal@gmail.com

10% discount for siblings, NHS, Police and Military Personnel

In Partnership With

[Click for more information](#)

JOIN IN THE FUN AT OUR
Easter Camp
Ages 3-14

Tennis Cricket Go Karts
Nerf Football

Week One: 4th-8th April Week Two: 11th-14th Week Three: 19th-22nd
Banbury / Bedford / Brackley / Filton / Milton Keynes

9-3:30pm / 10-5:30pm / 8-4pm / 8-5:30pm / 10-2pm from £18 per day
Activities: Specializing in Tennis, Cricket, and Football plus an introduction to a variety of other sports and activities like...
Throughout the day children can choose their preferred activities depending on what is feeling adventurous, or maybe on the creative side

BOOK NOW: www.sportscholars.com Tel 07811184310

[Click for more information](#)

ROBERT BLOOMFIELD ACADEMY
EASTER FAYRE

Our annual Fayre is bouncing back on
Saturday 26th March
10am - 1pm

COUNTRY PROPERTIES
Raffle Sponsored by COUNTRY PROPERTIES
1st Prize - £100 • 2nd Prize - £50
3rd Prize - Luxury Hamper

Plus lots more amazing prizes!
BBQ & Refreshments • Games
Full Entertainment Schedule

50p ENTRANCE

Stalls include - Miss Ellie Casual Dancewear, Temple Spa, Flamingo Paperie, Face Painting & Glitter Tattoo, Second Hand Uniform, Mother's Day and Easter Gifts, Badges, Bathbombs, Home Fragrances & Candles and much more

Family support Drop in

We provide a friendly service to families with children 0-12 years
No need to book, pop along for support or to meet other local families

Tuesday's 9 - 11 @ Arlesey Youth Centre High St SG15 6SN
Friday's 9 - 11 @ Shefford Children's centre School Lane SG17 5XA

Shefford and Shefford Children's Centre
0300 300 8112

Coffee afternoon with SEND support

Do you have a child aged 0-25 years with a disability, additional need or not yet diagnosed?
Join us at our coffee afternoon to meet other local families, share ideas and support each other in a friendly environment, come along with or without your child

Monday 10th January
Monday 14th February
Monday 14th March
1.30-2.30

Shefford and Shefford Children's Centre 0300 300 8112
local.support@thesharedlearningtrust.org.uk

Bertie the Brave Stories

By local author, teaching assistant and mum
Cinda Bertie

The original story, Bertie the Brave and the Dragon!
AND INTRODUCING THE SECOND NEW STORY
Bertie the Brave Superhero!

£5.99

Available to buy on Amazon.co.uk

To purchase follow the links

[Bertie the Brave](#)

[Bertie the Superhero](#)

Premier Education
5-star Holiday Camps

To put a spring in their step this Easter.

With action-packed sessions available throughout the school holidays, our camps are a fantastic place for children to meet new friends, have lots of fun, and create wonderful memories!

BOOK NOW AT:
premier-education.com/holiday-camps

Follow us on social:
[@PremierEducationUK](https://www.instagram.com/premiereducationuk)

Get 20% off when you Refer a Friend!

[Click for more information](#)

ENCOURAGING OUTDOOR LEARNING

LED BY SUMAIRA NAWAZ, SPECIALIST LEADER OF OUTDOOR EDUCATION & CAMERON WEBBER, FOREST LANE SCHOOL, PITCHBOROUGH

1ST MARCH 4:00PM - 5:15PM

DESIGNED FOR PARENTS AND CARERS OF CHILDREN WITH SEND (AGED 3-9)

FREE TO JOIN
TO BOOK YOUR PLACE:
EMAIL:CPD@THESHAREDLEARNINGTRUST.ORG.UK

AUTISM AWARENESS

LED BY MAREIA RAWLINGS, PRINCIPAL AND LEAD SEND PRACTITIONER AT THE SHARED LEARNING TRUST

15TH MARCH 4:00PM - 5:15PM

DESIGNED FOR PARENTS AND CARERS OF AN AUTISTIC CHILD(REN) AGED 4 TO 11

FREE TO JOIN
TO BOOK YOUR PLACE:
EMAIL:CPD@THESHAREDLEARNINGTRUST.ORG.UK

IMPLEMENTING A STRUCTURED AND BALANCED ROUTINE

LED BY TRACEY KING, DESIGNATED SENIORITY LEAD AND SENIORITY OFFICER AT THE SHARED LEARNING TRUST

10TH MARCH 4:00PM - 5:15PM

DESIGNED FOR PARENTS OF CHILDREN AGED BETWEEN 4 AND 11

FREE TO JOIN
TO BOOK YOUR PLACE:
EMAIL:CPD@THESHAREDLEARNINGTRUST.ORG.UK

SUPPORTING CHILDREN WITH SEND

LED BY SARAH CAVENOR & DAVID WASHINGTON, LEAD EDUCATION AT THE SHARED LEARNING TRUST

24TH FEBRUARY 4:00PM - 5:15PM

DESIGNED FOR FAMILIES OF CHILDREN AGED 4 - 16 WITH ADDITIONAL NEEDS

• Understanding how additional support will benefit your child
• What it means to get on the SEND register

FREE TO JOIN
TO BOOK YOUR PLACE:
EMAIL:CPD@THESHAREDLEARNINGTRUST.ORG.UK

Free courses designed for parents/ carers of children with SEND aged 3-9 and 4-16

To book a place email

cpd@thesharedlearningtrust.org.uk

News Central

Ivel Valley Parent Bulletin
Ivel Valley Early Help Bulletin



Frightened

by somebody who you
are in a relationship with?

Central
Bedfordshire

Worried

about abuse at home?

Am I in an
unhealthy relationship?



Young people
experience **abuse** too

**For help and information about unhealthy relationships
you can contact one of these services**

- National Domestic Abuse Helpline 0808 2000 247
- CHUMS 01525 863924
info@chums.uk.com
- NSPCC 0808 800 5000
help@nspcc.org.uk
- Sorted Bedfordshire 01582 674442
info@sortedbedfordshire.org.uk
- Childline 0800 11 11 11
- The Mix 0808 808 4994
- Young Minds
- The Hideout
- Embrace 0345 609 9960
info@embracecvoc.org.uk
- Kooth Counselling Service



@bedsdv

Shefford Lower School

Diary Dates

(further dates will be added and these will be in bold italics)

2022 Upcoming Dates

W/C 21st February	Year 3 Swimming lessons begin for 6 weeks
14th—18th March	Science Week
16th March	Year 1 Woburn Trip
18th March	Red Nose Day—Noses will be available to buy from class at £1.50
21st March—1st April	Big Walk and Wheel to school days—We want to encourage more families to travel to school actively, to help create healthier and happier communities
<u>28th March</u>	<u>Year 4's 1940s Activity Workshop</u>
30th March—1st April	Year 4 Residential Trip
1st April	Last day of Spring Term
19th April	SUMMER TERM Begins—Children Return
20th & 21st April	National Child Measurement Programme—Reception children.—The School nurse team will be in school for the NCMP—information sent out via Parentmail
27th April	Whole Class Photos
<u>30th May—3rd June</u>	<u>Half Term</u>
6th June 2022	Extra Bank Holiday to mark The Queen's Platinum
<u>14th June</u>	<u>Year 4 Faith Tour</u>
<u>22nd July</u>	<u>Last Day of Term</u>
<u>5th September</u>	<u>2022/2023 School Year Begins</u>

Drop off times—08.45—09.00am

Collection times—3.20pm

The school office will be open from 8.30am to 3.45pm for any queries, please call 01462 629123 or email

schooloffice@shefford.cbeds.co.uk.

Moving to become a primary as part of Central Bedfordshire's Schools For The Future project.

<https://www.schoolsforthefuture.co.uk/>

To find Shefford Lower's Academic Calendar for 2021/2022 and 2022/2023 please refer to our website

[**Term Dates Link**](#)

Please note this will be different to the Central Bedfordshire term dates